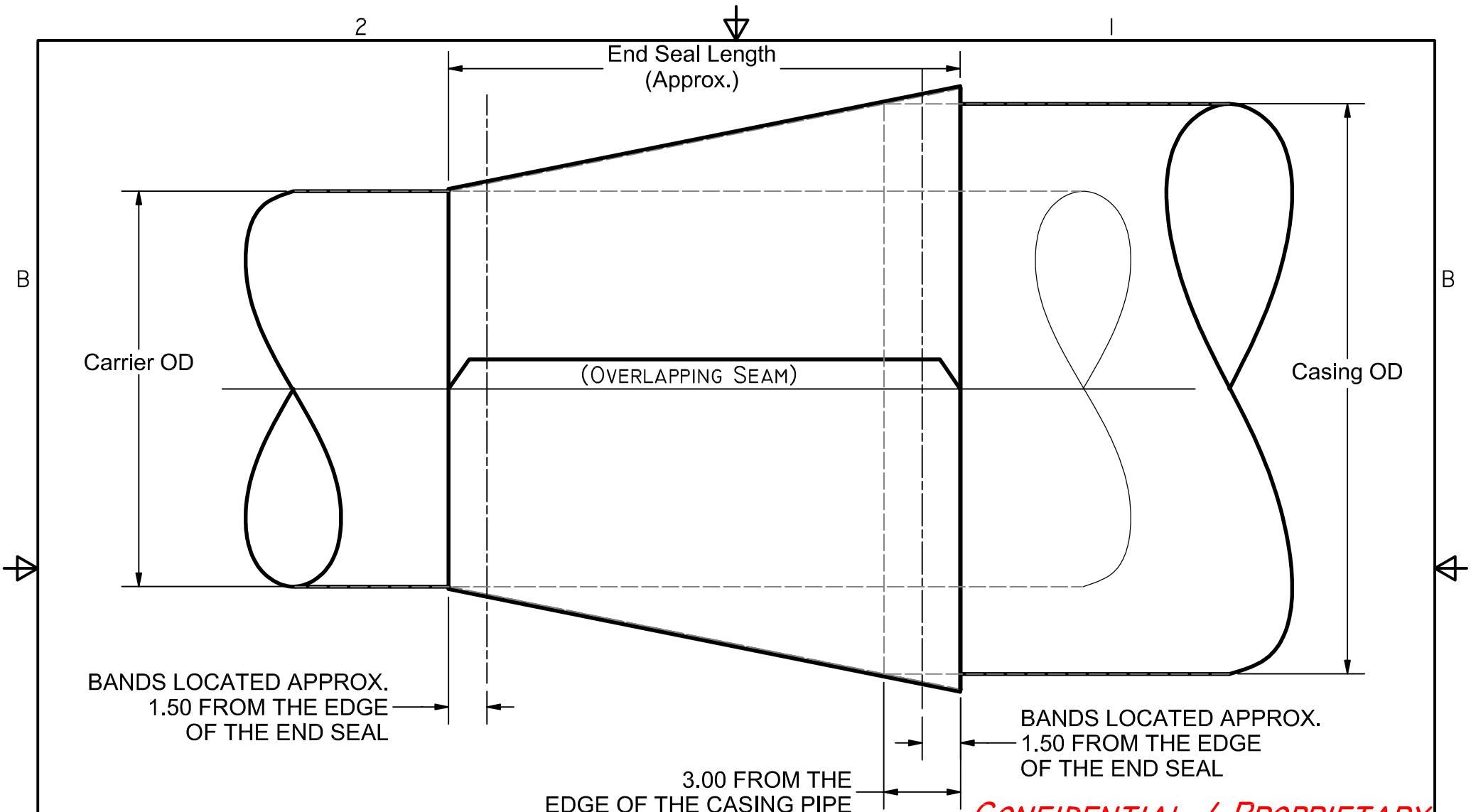




**"THE STANDARD OF EXCELLENCE IN THE INDUSTRY"**

### **CASING SPACERS END SEALS - STYLE – CCES**

Casing spacer end seals shall be a pull-over type construction and made from 0.090" (3/32") thick Neoprene with T304 stainless steel bands for securing the ends of the end seal to the casing pipe and carrier pipe. Casing spacer end seals shall be Model CCES as manufactured by Cascade Waterworks Mfg. Co. of Yorkville, IL or approved equal.



**CONFIDENTIAL / PROPRIETARY**


**MATERIAL SPECIFICATIONS:**

SEAL - NEOPRENE - 60 DUROMETER  
 (OTHER MATERIALS AVAILABLE)  
 BANDS - T304 STAINLESS STEEL

**NOTES: (cont'd.)**

10. NOT for pressure applications.

- NOTES: STANDARD TOLERANCES UNLESS OTHERWISE SPECIFIED
1. FINISH = XXXX
  2. 2 PLACE DECIMALS ± .03
  3. 3 PLACE DECIMALS ± .010
  4. ANGULAR DECIMALS ± 1/2 DEGREE.
  5. CHAMFER ALL MACHINED SURFACES .005-.010 x 45° AND REMOVE ALL BURRS.
  6. ALL PARTS MUST BE FREE FROM SCALE.
  7. NO TOLERANCE NEEDED ON REFERENCE DIMENSIONS.
  8. ALL BOLT CIRCLE TOLERANCES PER ANSI B16.5 PARA. 7.7
  9. CONCENTRICITY TO CENTERLINE .005

<b>End Seal Installation Guide</b>		
Push in Carrier side before tightening End Seal		
MATERIAL: (See Material Specifications)	DRAWING NO:	
SCALE: NTS	DRAWN BY: M. Zimmerle	REVISED 1:
DATE: 04/28/2016	APP'D BY:	REVISED 2:
 <b>Cascade Waterworks, Mfg.</b> 1213 BADGER STREET • YORKVILLE, ILLINOIS 60560		