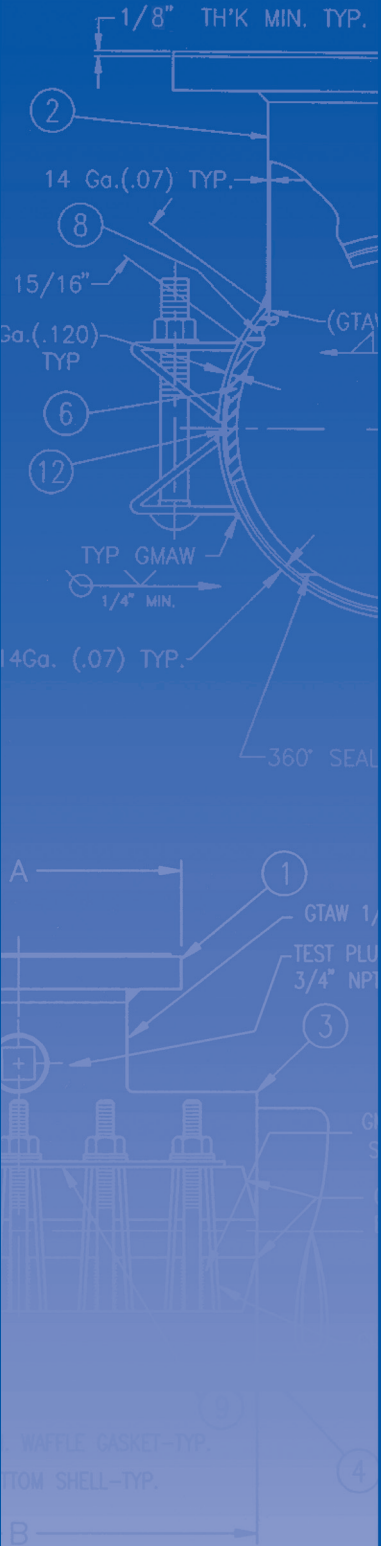




“The Standard of Excellence in the Industry”

PRODUCTS PRICE LIST

PRICES EFFECTIVE MAY 15, 2021



CASCADE WATERWORKS MANUFACTURING COMPANY

1213 BADGER STREET • YORKVILLE, ILLINOIS 60560
(630) 553-0840 • (800) 426-4301 • FAX (630) 553-0181
www.cascademfg.com



INDEX OF PRODUCTS

Casing Spacers/End Seals

Style CCS	Stainless Steel - All Applications	3
Style CCES	End Seals.....	3

Tapping Sleeves

Style CST-EX	SST - w/ SST, LA Flange or MJ Connection	4
Style CST-SL	SST - w/ SST, LA Flange or MJ Connection	5
Style CFT	Fabricated Steel – W/ NSF Compliant Epoxy Coat.....	6
Style CFT-LP	Fabricated Steel w/ NSF Epoxy Coat for PVC & Steel Pipe.....	7

Repair Clamps

Style CR1	SST - Single Section, Normal Range	8
Style CR2	SST - Two Section, Double Range	9
Style CR2-SR	SST - Two Section, Super Range.....	10
Style CR3	SST - Three Section, Extended Range.....	11
Style CRT, CDRT	Tapped Repair Clamps Options	11
Style CDR1	SST w/ Ductile Iron Lugs - Single Section, Normal Range	12
Style CDR2	SST w/ Ductile Iron Lugs - Single Double Section, Wide Range	13
Style CDR3	SST w/ Ductile Iron Lugs - Single Triple Section, Extended Range	14
Style CCLC	SST Collar Leak Clamp	15

Service Saddles

Style CTT	SST - Tiger Tee.....	16
Style CTTL	SST - Tigger Tee.....	17
Style CS12	SST - Double Band - 5" Wide	18
Style CS22	SST - Double Band - 8" Wide	18
Style CSC1	SST - Single Band - 5" Wide.....	19
Style CSC2	SST - Single Band - 8" wide.....	19
Style CSWRT	SST - Service Sewer Tee.....	20
Style CSWRY	SST - Service Sewer Wye.....	21
Style CNS1	Ductile Iron Body - Single SST Strap	22
Style CNS2	Ductile Iron Body - Double SST Strap.....	22
Style CDS1	Ductile Iron Body - Single SST U-Bolt.....	23
Style CDS2	Ductile Iron Body - Double SST U-Bolt.....	23
Style CDS-LD	Ductile Iron Body - Single SST Strap for Large O.D.....	24
Style CFS	Fabricated Steel Service Saddle w/ SST Band	25
Style CFT-TO	Fabricated Steel Tapping Saddle w/ Threaded Outlet (I.P.S.).....	26
Style CCAP	27

Couplings / Flange Adapters

Style CRCER	Ωmega Coupling.....	28
Style CRFAER	Ωmega Flange Adapter	29

Products for HDPE Pipe

Style CPS-IPS	HDPE Pipe Stiffening Inserts - IPS Sized Pipe.....	30
Style CPS-DIPS	HDPE Pipe Stiffening Inserts - DIPS Sized Pipe	31
Style PECST-SL	SST Tapping Sleeve for HDPE w/ SST or LA FLANGE or MJ Connection.....	32
Style PECR1, PECR2	SST Repair Clamp for HDPE - Single Section, Normal Range & Double Section, Wide Range	33
Style PECS22	SST Service Saddle for HDPE - Double Band (8" Wide).....	34
Style PECSC1, PECS12	SST Service Saddle for HDPE - Single Band & Double Band (5" Wide)	35

General Information

Terms & Conditions	36
Warranty	36
Pipe OD Chart	37

MATERIAL SPECIFICATIONS

Spacer Shells / Risers: T304 Stainless Steel
Runners: UHMW
Fasteners: 18-8/T304 SST
Liner: PVC



Casing Spacer - STYLE CCS

“Centered and Restrained” – The most common Casing Spacer type. Carrier pipe is positioned at the center of the casing pipe. Upper Risers/Runners are slightly shorter to allow for proper clearance during the push. This configuration “restrains” the carrier pipe from excessive flotation due to infiltration of ground water into the casing pipe during service life.

“Bottom Restrained” – Used to lift the carrier pipe up off of the bottom of the casing pipe but maintain a lower than centered position. This is usually done when the casing pipe has been placed higher than the optimum position and the carrier is desired to sit lower than center. The top Risers/Runners are longer to still provide restraint against excessive flotation due to infiltration of ground water.

“Standard” – Also known as “Clear Bell” spacers. These have Risers/Runners which are long enough to clear the Carrier Bell, but do not provide restraint against flotation. Please check with the specifying engineer prior to use, as most require centered and restrained spacers.

“Multi-Carrier” – Multiple carrier pipes are positioned to fit through the same Casing Pipe. This type is utilized as a means of cost reduction and efficient project management.

“Graded” – Used to correct issues where the Casing Pipe does not meet the required slope.

“Joint Restraint” – Used to restrain joints against axial withdrawal. Very popular in gravity sewer applications. For pressurized systems, please contact factory for further information and recommendations.

NOTES: As Casing Spacers are configured per the actual application specifics, **please contact office for pricing**. If not otherwise requested, Casing Spacers will be quoted and fabricated as “Centered and Restrained” (CTD) (most commonly specified type). Please have the following information ready for accurate pricing.

Required for Quoting:

Carrier Pipe OD
 Carrier Pipe BELL OD (if applicable)
 Any external restraining device dimensions
 Casing Pipe ID (or Wall thickness with OD)

Required at time of Ordering:

Info req'd for Quoting plus
 Pipe type(s)
 Any other pertinent data

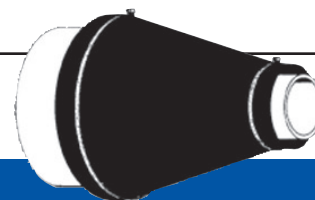
Failure to provide the above listed details may result in improper fit and function, and is the responsibility of the purchasing party.

STYLE CCES

CASING SPACER END SEALS

MATERIAL SPECIFICATIONS

Seal: Neoprene
Band Clamp / Fasteners: 18-8/T304 SST



Casing End Seal - STYLE CCES

End Seals – Flexible rubber barrier for the ends of a Casing Pipe. These are conical shaped Neoprene Rubber (Other material types available) debris barriers used to slip over the carrier and casing to aid in the prevention of backfill infiltration. Proper backfill techniques are still needed to ensure a successful finish to any pipe encasement project.

STYLE CST-EX

STAINLESS STEEL TAPPING SLEEVE
w/ STAINLESS STEEL, LOW ALLOY FLANGE or MJ CONNECTION

MATERIAL SPECIFICATIONS NSF/ANSI 61 & AWWA C223 Compliant

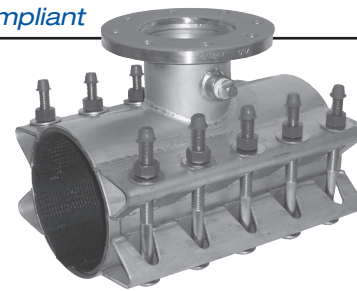
Flange: T304 SST or Low Alloy;
complies with AWWA C228 (SST) /
AWWA C207 (LA)

Gaskets: Virgin SBR (other materials
available upon request)
Branch Gasket Patent 6,173,967B1

Shell/Lugs: T304 SST

Fasteners: T304 SST 5/8
UNC, Rolled Thread;
Fluoropolymer Coated
Heavy Hex Nut

Washers/Washer Plate:
T304 SST



See **STYLE PECST-SL** for HDPE pipe applications

Nominal Pipe Size (Inches)	O.D. Range (Inches)	Catalog Number		List Price	
		Sleeve	Flange Size	S.S. Flange or MJ connection	L.A. Flange
4	4.40 - 4.60	CST-EX-460	4*	1,037.00	837.00
	4.70 - 4.90	CST-EX-490			
	4.80 - 5.00	CST-EX-500			
	5.10 - 5.30	CST-EX-530			
	5.20 - 5.40	CST-EX-540			
6	6.60 - 7.00	CST-EX-700	4	1,040.00	883.00
	6.90 - 7.30	CST-EX-730			
	7.10 - 7.50	CST-EX-750	6*	1,103.00	950.00
	7.50 - 7.90	CST-EX-790			
8	7.90 - 8.30	CST-EX-830	4	1,095.00	968.00
	8.35 - 8.75	CST-EX-875			
	8.63 - 9.05	CST-EX-905	6	1,182.00	1,025.00
	8.95 - 9.35	CST-EX-935			
	9.20 - 9.60	CST-EX-960	8*	1,478.00	1,247.00
10.50 - 10.90	CST-EX-1090				
10	10.75 - 11.10	CST-EX-1110	4	1,320.00	1,186.00
	11.00 - 11.40	CST-EX-1140			
	11.40 - 11.80	CST-EX-1180	6	1,359.00	1,198.00
	11.80 - 12.20	CST-EX-1220			
	12.50 - 12.90	CST-EX-1290	8	1,657.00	1,409.00
13.00 - 13.40	CST-EX-1340				
12	13.20 - 13.60	CST-EX-1360	10*	2,622.00	2,181.00
	13.40 - 13.80	CST-EX-1380			
	14.00 - 14.40	CST-EX-1440	4	1,491.00	1,277.00
	15.10 - 15.50	CST-EX-1550			
	15.40 - 15.80	CST-EX-1580	6	1,630.00	1,336.00
15.80 - 16.20	CST-EX-1620				
14	16.38 - 16.78	CST-EX-1678	8	2,216.00	1,862.00
	17.20 - 17.60	CST-EX-1760			
	17.40 - 17.80	CST-EX-1780	10	2,925.00	2,505.00
	17.76 - 18.16	CST-EX-1816			
	18.40 - 18.80	CST-EX-1880	12	3,107.00	2,656.00
18.60 - 19.00	CST-EX-1900				
16	18.80 - 19.20	CST-EX-1920	4	1,605.00	1,553.00
	19.30 - 19.70	CST-EX-1970			
	19.80 - 20.20	CST-EX-2020	6	1,923.00	1,667.00
	21.00 - 21.40	CST-EX-2140			
	21.40 - 21.80	CST-EX-2180	8	2,216.00	1,862.00
21.90 - 22.30	CST-EX-2230				
18	22.10 - 22.50	CST-EX-2250	10	2,925.00	2,505.00
	23.20 - 23.60	CST-EX-2360			
	25.60 - 26.00	CST-EX-2600	12	3,243.00	2,940.00
	26.10 - 26.50	CST-EX-2650			
	27.90 - 28.30	CST-EX-2830	4	1,961.00	1,670.00
20			6	2,197.00	1,852.00
			8	2,345.00	2,086.00
			10	3,216.00	2,703.00
24			12	3,638.00	3,160.00
			4	2,002.00	1,751.00
			6	2,234.00	1,882.00
		8	2,767.00	2,179.00	
		10	3,657.00	2,668.00	
		12	4,060.00	3,250.00	
		4	2,171.00	1,838.00	
		6	2,478.00	1,976.00	
		8	2,838.00	2,388.00	
		10	3,752.00	2,845.00	
		12	4,124.00	3,605.00	
		4	2,373.00	2,194.00	
		6	2,575.00	2,360.00	
		8	2,932.00	2,463.00	
		10	3,867.00	2,984.00	
		12	4,365.00	3,727.00	

* Indicates size on size sleeves within this range require a 1/2" undersize cutter.
All Sleeves hydrostatically tested to at least 1.5 times the Rated Working Pressure.
Pressure rating may be application specific. Branch sizes 4" - 8": 225 psi Minimum Test Pressure;
branch sizes 10" - 12": 150 psi Minimum Test Pressure. Consult factory for specific applications.
Larger Sizes, Special Ranges, and 3" Flange Outlets Available.

TO ORDER: Choose Style of Sleeve, O.D. Range, Flange Size, and Flange Type.

EXAMPLE: An extra heavy-duty sleeve for 12" D.I.P. (O.D. 13.20") with a 6" Stainless Steel flange would be a **CST-EX-1340-6-SS**. Same sleeve with an 8" Low Alloy flange would be **CST-EX-1340-8-LA**.

STYLE CST-SL

STAINLESS STEEL TAPPING SLEEVE
w/ STAINLESS STEEL, LOW ALLOY FLANGE or MJ CONNECTION

MATERIAL SPECIFICATIONS *NSF/ANSI 61 & AWWA C223 Compliant*

Flange: T304 SST or Low Alloy;
complies with AWWA C228 (SST) /
AWWA C207 (LA)

Gaskets: Virgin SBR (other materials
available upon request)
Branch Gasket Patent 6,173,967B1

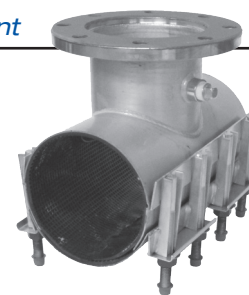
Shell/Lugs: T304 SST

Fasteners: T304 SST, 5/8 UNC,
Rolled Thread; Fluoropolymer
Coated Heavy Hex Nut

Washers/Washer Plate:
T304 SST

Lubricating Washers: Nylon

See **STYLE PECST-SL** for HDPE pipe applications



Nominal Pipe Size (Inches)	O.D. Range (Inches)	Catalog Number		List Price	
		Sleeve	Flange Size	S.S. Flange or MJ connection	L.A. Flange
4	4.40 - 4.60	CST-SL-460	4*	928.00	691.00
	4.70 - 4.90	CST-SL-490			
	4.80 - 5.00	CST-SL-500			
	5.10 - 5.30	CST-SL-530			
	5.20 - 5.40	CST-SL-540			
6	6.60 - 7.00	CST-SL-700	4	984.00	733.00
	6.90 - 7.30	CST-SL-730			
	7.10 - 7.50	CST-SL-750	6*	1,045.00	825.00
	7.50 - 7.90	CST-SL-790			
8	7.90 - 8.30	CST-SL-830	4	1,060.00	803.00
	8.35 - 8.75	CST-SL-875			
	8.63 - 9.05	CST-SL-905	6	1,116.00	860.00
	8.95 - 9.35	CST-SL-935			
	9.20 - 9.60	CST-SL-960	8*	1,367.00	1,043.00
10.50 - 10.90	CST-SL-1090				
10	10.75 - 11.10	CST-SL-1110	4	1,089.00	913.00
	11.00 - 11.40	CST-SL-1140			
	11.40 - 11.80	CST-SL-1180	6	1,189.00	923.00
	11.80 - 12.20	CST-SL-1220			
	12.50 - 12.90	CST-SL-1290	8	1,505.00	1,171.00
13.00 - 13.40	CST-SL-1340				
12	13.20 - 13.60	CST-SL-1360	8	1,745.00	1,382.00
	13.40 - 13.80	CST-SL-1380			
	13.80 - 14.20	CST-SL-1420	10	2,451.00	1,924.00
	14.00 - 14.40	CST-SL-1440			
	14.40 - 14.80	CST-SL-1480	12*	2,718.00	2,008.00
15.10 - 15.50	CST-SL-1550				
14	15.40 - 15.80	CST-SL-1580	4	1,479.00	1,378.00
	15.80 - 16.20	CST-SL-1620			
	16.20 - 16.60	CST-SL-1660	6	1,764.00	1,441.00
	16.38 - 16.78	CST-SL-1678			
	16.78 - 17.18	CST-SL-1718	8	2,169.00	1,784.00
17.20 - 17.60	CST-SL-1760				
16	17.40 - 17.80	CST-SL-1780	6	1,999.00	1,644.00
	17.76 - 18.16	CST-SL-1816			
	18.40 - 18.80	CST-SL-1880	8	2,238.00	1,941.00
	18.60 - 19.00	CST-SL-1900			
	19.00 - 19.40	CST-SL-1940	10	2,942.00	2,471.00
18.80 - 19.20	CST-SL-1920				
18	19.30 - 19.70	CST-SL-1970	4	1,918.00	1,680.00
	19.80 - 20.20	CST-SL-2020			
	20.20 - 20.60	CST-SL-2060	6	2,115.00	1,770.00
	21.00 - 21.40	CST-SL-2140			
	21.40 - 21.80	CST-SL-2180	8	2,563.00	1,996.00
21.90 - 22.30	CST-SL-2230				
20	22.10 - 22.50	CST-SL-2250	10	3,140.00	2,580.00
	22.50 - 22.90	CST-SL-2290			
	22.90 - 23.30	CST-SL-2330	12	3,836.00	3,343.00
	23.30 - 23.70	CST-SL-2370			
	23.70 - 24.10	CST-SL-2410	4	2,114.00	1,770.00
24.10 - 24.50	CST-SL-2450				
24	25.60 - 26.00	CST-SL-2600	6	2,361.00	1,838.00
	26.10 - 26.50	CST-SL-2650			
	26.50 - 26.90	CST-SL-2690	8	2,684.00	2,207.00
	27.90 - 28.30	CST-SL-2830			
	28.30 - 28.70	CST-SL-2870	10	3,264.00	2,740.00
28.70 - 29.10	CST-SL-2910				
29.10 - 29.50	CST-SL-2950	12	4,018.00	3,368.00	
29.50 - 29.90	CST-SL-2990				
29.90 - 30.30	CST-SL-3030	4	2,234.00	1,948.00	
30.30 - 30.70	CST-SL-3070				
30.70 - 31.10	CST-SL-3110	6	2,587.00	2,017.00	
31.10 - 31.50	CST-SL-3150				
31.50 - 31.90	CST-SL-3190	8	2,806.00	2,153.00	
31.90 - 32.30	CST-SL-3230				
32.30 - 32.70	CST-SL-3270	10	3,395.00	2,898.00	
32.70 - 33.10	CST-SL-3310				
33.10 - 33.50	CST-SL-3350	12	4,225.00	3,625.00	
33.50 - 33.90	CST-SL-3390				

* Indicates size on size sleeves within this range require a 1/2" undersize cutter.
All Sleeves hydrostatically tested to at least 1.5 times the Rated Working Pressure.
Pressure rating may be application specific. Branch sizes 4" - 8": 175 psi Minimum Test Pressure, branch sizes 10" - 12": 125 psi Minimum Test Pressure. Consult factory for specific applications.
Larger Sizes, Special Ranges, and 3" Flange Outlets Available.

TO ORDER: Choose Style of Sleeve, O.D. Range, Flange Size, and Flange Type.
EXAMPLE: A super light-weight sleeve for 12" D.I.P. (O.D. 13.20") with a 6" Stainless Steel flange would be a **CST-SL-1340-6-SS**. Same sleeve with an 8" Low Alloy flange would be **CST-SL-1340-8-LA**.

MATERIAL SPECIFICATIONS

AWWA C223 Compliant

Body/Outlet Nozzle: Steel ASTM A36 (A285 Grade C)

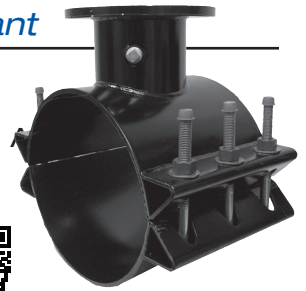
Branch Gasket: EPDM

Flange: Low Alloy; AWWA C207; Class D, ANSI 150# drilling pattern; MSS-SP 60

Fasteners: High Strength, Low Alloy steel, A242 (18-8 / T304 Stainless Steel optional)

Finish: Epoxy certified NSF/ANSI 61

Flange Gasket: SBR



Normal Pipe Size (Inches)	Sleeve O.D. Range (Inches)	Catalog Number	Flange Size	List Price	
				Low Alloy Bolts (CFT)	S.S. Bolts (CFT-EES)
4	4.50	CFT-0450	*4	718.00	877.00
	4.80	CFT-0480			
6	6.57 - 6.73	CFT-0673	4	735.00	916.00
	6.83 - 7.16	CFT-0716			
	7.20 - 7.60	CFT-0760	*6	824.00	994.00
	7.40 - 7.73	CFT-0773			
8	7.95 - 8.05	CFT-0805	4	749.00	941.00
	8.36 - 8.75	CFT-0875			
	8.73 - 9.12	CFT-0912	*8	1,076.00	1,019.00
	8.89 - 9.37	CFT-0937			
	9.27 - 9.69	CFT-0969			
10	19.95 - 10.10	CFT-1010	4	848.00	1,062.00
	10.45 - 10.88	CFT-1088			
	11.03 - 11.47	CFT-1147	*10	1,377.00	1,771.00
	11.36 - 11.80	CFT-1180			
12	11.76 - 12.20	CFT-1220	4	939.00	1,121.00
	12.42 - 12.88	CFT-1288			
	13.14 - 13.60	CFT-1360	*8	1,188.00	1,471.00
	13.60 - 14.09	CFT-1409			
	14.10 - 14.58	CFT-1458			
14-16	14.59 - 15.08	CFT-1508	4	1,007.00	1,171.00
	15.23 - 15.72	CFT-1572			
	15.73 - 16.22	CFT-1622	*10	1,803.00	2,122.00
	16.30 - 16.73	CFT-1673			
	16.74 - 17.26	CFT-1726			
16-18	17.33 - 17.87	CFT-1787	4	1,091.00	1,243.00
	17.88 - 18.43	CFT-1843			
	18.46 - 19.03	CFT-1903	*8	1,324.00	1,597.00
	18.87 - 19.45	CFT-1945			
	19.41 - 20.01	CFT-2001			
18-20	19.88 - 20.48	CFT-2048	4	1,250.00	1,402.00
	20.29 - 20.92	CFT-2092			
	20.93 - 21.57	CFT-2157	*10	1,950.00	2,456.00
	21.40 - 22.13	CFT-2213			
	22.16 - 22.81	CFT-2281			
20-24	22.78 - 23.45	CFT-2345	4	1,329.00	1,482.00
	23.46 - 24.16	CFT-2416			
	24.15 - 24.85	CFT-2485	*12	2,324.00	2,869.00
	24.82 - 25.52	CFT-2552			
	25.71 - 26.41	CFT-2641			
24	26.55 - 27.25	CFT-2725	4	1,450.00	1,624.00
	27.26 - 27.96	CFT-2796			
	28.14 - 28.84	CFT-2884	*8	1,730.00	1,992.00
	29.78 - 30.48	CFT-3048			
	30.48 - 31.18	CFT-3118			
30	31.52 - 32.22	CFT-3222	*10	2,166.00	2,847.00
				*12	2,830.00

* Indicates size on size sleeves within this range require a 1/2" undersize cutter.

NOTE: Other sizes and ranges available upon request. All Sleeves hydrostatically tested to 1.5 times the rated working pressure. *(Not recommended for PVC pipe. See CFT-LP)*

TO ORDER: Choose Style of Sleeve, O.D. Range, Flange Size and Bolt Style.

EXAMPLE: A fabricated steel tapping sleeve for 12" D.I.P. (O.D. ø13.20") with a 6" flange would be a **CFT-1360-06**. Same sleeve with SS Bolts would be **CFT-ESS-1360-06**.

STYLE CFT-LP

FABRICATED STEEL TAPPING SLEEVE WITH NSF EPOXY COAT FOR PVC & STEEL PIPE

MATERIAL SPECIFICATIONS

AWWA C223 Compliant

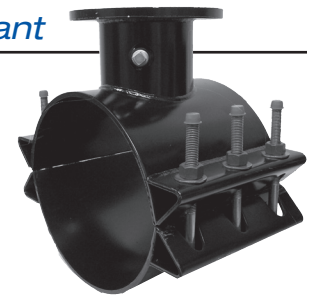
Body/Outlet Nozzle: Steel ASTM A36 (A285 Grade C)

Fasteners: High Strength, Low Alloy steel, ASTM A242 (18-8 / T304 Stainless Steel optional)

Flange: Low Alloy; AWWA C207; Class D, ANSI 150# drilling pattern; MSS-SP 60

Finish: Epoxy certified NSF/ANSI 61

Flange Gasket: SBR



Branch Gasket: EPDM

Nominal Pipe Size (Inches)	Sleeve O.D. Range (Inches)	Catalog Number	Flange Size	List Price	
				Low Allow Bolts (CFT-LP)	S.S. Bolts (CFT-LP-ESS)
PVC - IPS SIZED PIPE					
4	4.50	CFT-LP-0450-04	4*	659.00	889.00
5	5.56	CFT-LP-0556-04	4	705.00	912.00
6	6.63	CFT-LP-0663-04	4	717.00	930.00
		CFT-LP-0663-06	6*	788.00	966.00
8	8.63	CFT-LP-0863-04	4	763.00	995.00
		CFT-LP-0863-06	6	807.00	1,010.00
		CFT-LP-0863-08	8*	1,012.00	1,301.00
10	10.75	CFT-LP-1075-04	4	866.00	1,131.00
		CFT-LP-1075-06	6	905.00	1,143.00
		CFT-LP-1075-08	8	1,053.00	1,372.00
		CFT-LP-1075-10	10*	1,289.00	1,703.00
12	12.75	CFT-LP-1275-04	4	930.00	1,202.00
		CFT-LP-1275-06	6	1,045.00	1,237.00
		CFT-LP-1275-08	8	1,176.00	1,476.00
		CFT-LP-1275-10	10	1,327.00	1,752.00
		CFT-LP-1275-12	12*	1,676.00	2,118.00

PVC - DIPS SIZED PIPE					
4	4.80	CFT-LP-0480-04	4*	664.00	909.00
6	6.90	CFT-LP-0690-04	4	720.00	946.00
		CFT-LP-0690-06	6*	801.00	972.00
8	9.05	CFT-LP-0905-04	4	777.00	1,014.00
		CFT-LP-0905-06	6	822.00	1,076.00
		CFT-LP-0905-08	8*	1,022.00	1,310.00
10	11.10	CFT-LP-1110-04	4	880.00	1,176.00
		CFT-LP-1110-06	6	914.00	1,236.00
		CFT-LP-1110-08	8	1,080.00	1,412.00
		CFT-LP-1110-10	10*	1,393.00	1,771.00
12	13.20	CFT-LP-1320-04	4	949.00	1,256.00
		CFT-LP-1320-06	6	1,110.00	1,381.00
		CFT-LP-1320-08	8	1,273.00	1,580.00
		CFT-LP-1320-10	10	1,500.00	1,796.00
		CFT-LP-1320-12	12*	1,718.00	2,178.00

* Indicates size on size sleeves within this range require a 1/2" undersize cutter.

NOTE: Other sizes and ranges available upon request. All Sleeves hydrostatically tested to 1.5 times the rated working pressure. For Steel, CI and DI pipe, use **CFT**.

TO ORDER: Choose Style of Sleeve, O.D. Range, Flange Size and Bolt Style.

EXAPMLE: A fabricated steel tapping sleeve for 12" SDR 21 PVC pipe (O.D. ø12.75") with a 6" flange would be a **CFT-LP-1275-06**. Same sleeve with SS Bolts would be **CFT-LP-ESS-1275-06**.

MATERIAL SPECIFICATIONS

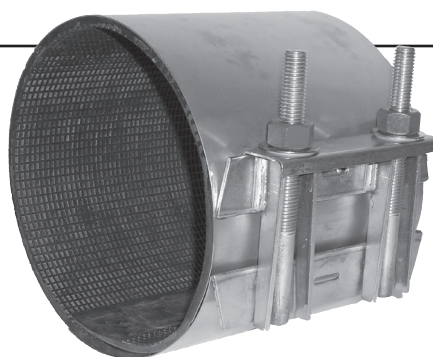
Shell/Lugs/Bars: T304 SST

Gaskets: SBR (other materials available upon request)

Fasteners: T304 SST, 5/8 UNC, Rolled Thread;
Fluoropolymer Coated, Heavy Hex Nut

Washer Plate: T304 SST

Lubricating Washers: Nylon



See **Style PECR1** for HDPE pipe applications

Nominal Pipe Size (Inches)	Clamp O.D. Range (Inches)	Catalog Number	List Price							
			6"	8"	10"	12"	16"	20"	24"	30"
2	2.32 - 2.63	CR1-0263-Length	99.00	108.00	136.00	156.00	197.00	—	—	—
2 1/4	2.57 - 2.87	CR1-0287-Length	101.00	109.00	140.00	160.00	199.00	—	—	—
2-1/4 - 2-1/2	2.70 - 3.00	CR1-0300-Length	103.00	113.00	143.00	163.00	209.00	—	—	—
3	2.95 - 3.25	CR1-0325-Length	125.00	129.00	171.00	191.00	237.00	—	—	—
	3.40 - 3.70	CR1-0370-Length								
3 & 4	3.71 - 4.00	CR1-0400-Length	128.00	135.00	175.00	195.00	244.00	—	—	—
4	4.45 - 4.75	CR1-0475-Length	130.00	138.00	182.00	210.00	263.00	363.00	434.00	555.00
	4.75 - 5.15	CR1-0515-Length								
4 & 5	4.95 - 5.35	CR1-0535-Length	135.00	144.00	192.00	217.00	267.00	375.00	474.00	697.00
	5.20 - 5.60	CR1-0560-Length								
6	5.95 - 6.35	CR1-0635-Length	—	164.00	215.00	251.00	324.00	429.00	540.00	727.00
	6.55 - 6.95	CR1-0695-Length								
	6.84 - 7.24	CR1-0724-Length								
	7.05 - 7.45	CR1-0745-Length								
	7.45 - 7.85	CR1-0785-Length								
8	7.95 - 8.35	CR1-0835-Length	—	186.00	244.00	295.00	370.00	489.00	610.00	776.00
	8.59 - 8.99	CR1-0899-Length								
	9.00 - 9.40	CR1-0940-Length								
	9.30 - 9.70	CR1-0970-Length								
8 & 10	9.75 - 10.15	CR1-1015-Length	—	240.00	315.00	349.00	440.00	578.00	708.00	922.00
10	10.65 - 11.05	CR1-1105-Length	—	246.00	338.00	405.00	508.00	629.00	746.00	1,012.00
	11.04 - 11.44	CR1-1144-Length								
	11.35 - 11.75	CR1-1175-Length								
	11.75 - 12.15	CR1-1215-Length								
	11.95 - 12.35	CR1-1235-Length								
12	12.65 - 13.05	CR1-1305-Length	—	278.00	369.00	444.00	573.00	704.00	842.00	1,136.00
	13.10 - 13.50	CR1-1350-Length								
	13.40 - 13.80	CR1-1380-Length								
12 & 14	13.70 - 14.10	CR1-1410-Length	—	300.00	388.00	474.00	618.00	747.00	913.00	1,229.00
	14.00 - 14.40	CR1-1440-Length								

Conductivity Strips available for \$20.00 per unit, add on to NET price.

NOTE: Other ranges and lengths not listed are available upon request. For higher pressures, clamp length should be equal to or longer than the O.D. of the pipe.

TO ORDER: Determine desired range and length, then select corresponding Catalog Number.

EXAMPLE: A single section stainless steel clamp, 12" in length for 8" C-900 PVC would be **CR1-0940-12**.

MATERIAL SPECIFICATIONS

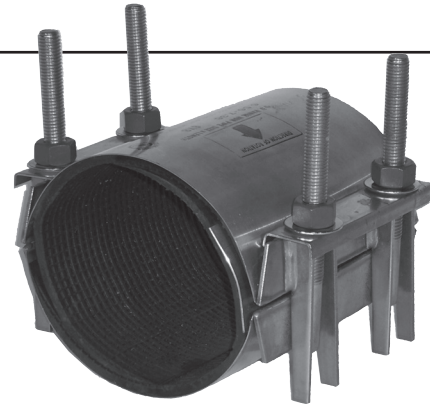
Shell/Lugs/Bars: T304 SST

Gaskets: SBR (other materials available upon request)

Fasteners: T304 SST, 5/8 UNC, Rolled Thread;
Fluoropolymer Coated, Heavy Hex Nut

Washer Plates: T304 SST

Lubricating Washers: Nylon



See **Style PECR2** for HDPE pipe applications

Nominal Pipe Size (Inches)	Clamp O.D. Range (Inches)	Catalog Number	List Price						
			8"	10"	12"	16"	20"	24"	30"
4	4.44 - 5.26	CR2-0526-Length	213.00	275.00	319.00	403.00	517.00	673.00	—
	4.75 - 5.57	CR2-0557-Length							
6	6.56 - 7.36	CR2-0736-Length	260.00	325.00	373.00	492.00	613.00	819.00	957.00
	6.84 - 7.64	CR2-0764-Length							
8	8.60 - 9.40	CR2-0940-Length	271.00	333.00	398.00	508.00	701.00	942.00	1,083.00
	8.99 - 9.79	CR2-0979-Length							
10	10.70 - 11.50	CR2-1150-Length	—	420.00	575.00	630.00	859.00	1,072.00	1,339.00
	11.05 - 11.85	CR2-1185-Length							
	11.40 - 12.20	CR2-1220-Length							
12	12.70 - 13.50	CR2-1350-Length	—	517.00	710.00	744.00	996.00	1,293.00	1,523.00
	13.15 - 13.95	CR2-1395-Length							
	13.60 - 14.40	CR2-1440-Length							
	13.85 - 14.65	CR2-1465-Length							
14	14.38 - 15.18	CR2-1518-Length	—	555.00	796.00	870.00	1,118.00	1,452.00	1,707.00
	15.07 - 15.87	CR2-1587-Length							
16	15.92 - 16.67	CR2-1667-Length	—	634.00	835.00	943.00	1,231.00	1,605.00	2,028.00
	16.56 - 17.31	CR2-1731-Length							
	17.15 - 17.90	CR2-1790-Length							
18	17.82 - 18.57	CR2-1857-Length	—	668.00	876.00	974.00	1,273.00	1,650.00	2,127.00
	18.46 - 19.21	CR2-1921-Length							
	19.23 - 19.98	CR2-1998-Length							
20	19.90 - 20.65	CR2-2065-Length	—	722.00	969.00	1,030.00	1,333.00	1,728.00	2,189.00
	20.70 - 21.45	CR2-2145-Length							
	21.52 - 22.27	CR2-2227-Length							
	22.12 - 22.87	CR2-2287-Length							
	22.90 - 23.65	CR2-2365-Length							

Conductivity Strips available for \$12.00 per unit, add on to NET price.

NOTE: Other pipe O.D. ranges and lengths not listed are available upon request. For higher pressures, clamp length should be equal to or longer than the O.D. of the pipe.

TO ORDER: Determine desired range and length, then select corresponding Catalog Number.

EXAMPLE: A two section stainless steel clamp, 12" in length for 8" DI Pipe would be **CR2-0940-12**.

MATERIAL SPECIFICATIONS

Shell/Lugs/Bars: T304 SST

Washer Plates: T304 SST

Gaskets: SBR (other materials available upon request)

Lubricating Washers:
Nylon

Fasteners: T304 SST, 5/8 UNC, Rolled Thread;
Fluoropolymer Coated, Heavy Hex Nut



Nominal Pipe Size (Inches)	Clamp O.D. Range (Inches)	Catalog Number	List Price						
			8"	10"	12"	16"	20"	24"	30"
8	8.60-9.80	CR2-SR-0980-Length	297.00	372.00	444.00	665.00	785.00	1,132.00	1,385.00
10	10.70-11.90	CR2-SR-1190-Length	—	504.00	604.00	696.00	966.00	1,241.00	1,505.00
	11.05-12.25	CR2-SR-1225-Length							
12 – 14	12.70-13.90	CR2-SR-1390-Length							
	13.15-14.35	CR2-SR-1435-Length	—	565.00	700.00	819.00	1,128.00	1,602.00	1,681.00
	13.65-14.85	CR2-SR-1485-Length							
14 – 16	14.45-15.65	CR2-SR-1565-Length							
	14.85-16.05	CR2-SR-1605-Length	—	648.00	826.00	928.00	1,233.00	1,946.00	2,310.00
	15.92-17.12	CR2-SR-1712-Length							
16 – 18	17.15-18.35	CR2-SR-1835-Length							
	18.46-19.66	CR2-SR-1966-Length	—	711.00	944.00	1,068.00	1,325.00	1,996.00	2,409.00
18 – 20	19.45-20.65	CR2-SR-2065-Length							
	21.50-22.70	CR2-SR-2270-Length	—	794.00	1,135.00	1,197.00	1,556.00	2,136.00	2,688.00

Conductivity Strips available for \$12.00 per unit, add on to NET price.

NOTE: Other pipe O.D. ranges and lengths not listed are available upon request. For higher pressures, clamp length should be equal to or longer than the O.D. of the pipe.

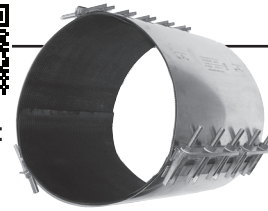
TO ORDER: Determine desired range and length, then select corresponding Catalog Number.

EXAMPLE: A two section stainless steel clamp, 12" in length for 8" DI Pipe would be **CR2-SR-0980-12**.

MATERIAL SPECIFICATIONS

Shell/Lugs/Bars: T304 SST
Gaskets: SBR (other materials available upon request)
Fasteners: T304 SST, 5/8-11 UNC, Rolled Thread; Fluoropolymer Coated, Heavy Hex Nut

Washer Plates: T304 SST
Lubricating Washers: Nylon



Nominal Pipe Size (Inches)	Clamp O.D. Range (Inches)	Catalog Number	List Price				
			12"	16"	20"	24"	30"
10	11.04-12.24	CR3-1224-Length	970.00	1,335.00	1,580.00	1,921.00	2,785.00
12 - 14	13.14-14.34	CR3-1434-Length	1,012.00	1,399.00	1,615.00	2,060.00	2,987.00
	13.65-14.85	CR3-1485-Length	1,040.00	1,448.00	1,640.00	2,118.00	3,069.00
14 - 16	14.85-16.05	CR3-1605-Length	1,079.00	1,488.00	1,790.00	2,186.00	3,177.00
	15.92-17.12	CR3-1712-Length	1,113.00	1,522.00	1,933.00	2,258.00	3,280.00
16 - 18	17.15-18.35	CR3-1835-Length	1,144.00	1,553.00	1,962.00	2,576.00	3,736.00
	18.46-19.66	CR3-1966-Length	1,234.00	1,676.00	2,142.00	2,685.00	3,890.00
18 - 20	19.45-20.65	CR3-2065-Length	1,289.00	1,736.00	2,202.00	2,813.00	4,079.00
	21.52-22.72	CR3-2272-Length	1,429.00	1,972.00	2,417.00	3,157.00	4,580.00
20 - 24	23.28-24.48	CR3-2448-Length	1,567.00	2,569.00	2,914.00	3,633.00	5,269.00
	24.38-25.58	CR3-2558-Length	1,677.00	2,797.00	3,302.00	4,134.00	5,995.00
24	25.70-26.90	CR3-2690-Length	2,037.00	2,859.00	3,537.00	4,628.00	6,697.00
	26.48-27.68	CR3-2768-Length	2,145.00	2,958.00	3,715.00	4,865.00	7,060.00
24 - 27	27.65-28.85	CR3-2885-Length	2,245.00	3,107.00	3,893.00	5,103.00	7,395.00
	28.73-29.93	CR3-2993-Length	2,364.00	3,256.00	4,093.00	5,322.00	7,714.00
24 - 30	29.62-30.82	CR3-3082-Length	2,483.00	3,414.00	4,300.00	5,718.00	8,286.00
	31.22-32.42	CR3-3242-Length	2,602.00	3,603.00	4,519.00	6,114.00	8,852.00

Conductivity Strips available for \$12.00 per unit, add on to NET price.

NOTE: Other pipe O.D. ranges and lengths not listed are available upon request. For higher pressures, clamp length should be equal to or longer than the O.D. of the pipe.

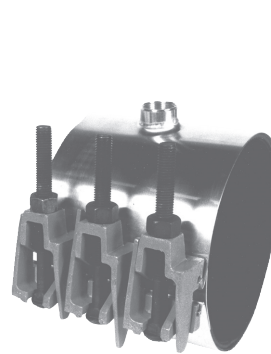
TO ORDER: Determine desired range and length, then select corresponding Catalog Number.

EXAMPLE: A two section stainless steel clamp, 12" in length for 12" DI Pipe would be **CR3-1434-12**.

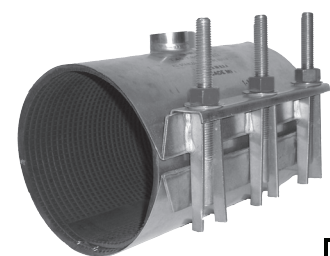
STYLES CRT & CDRT TAPPED REPAIR CLAMPS OPTIONS

All CR1, CR2, CR2-SR, CR3 and CDR1, CDR2, DR3 repair clamps are available with tapped outlets. Outlets are T-304 stainless steel, are welded to the clamp, and are fully, **chemically passivated** in compliance with **ASTM A380**.

Tap Size	Type of Threads	List Price
3/4"	IP or CC	62.00
1"	IP or CC	62.00
1-1/4"	IP or CC	85.00
1-1/2"	IP or CC	85.00
2"	IP	89.00
2"	CC	100.00
3"	IP	298.00
4"	IP	298.00



Style CDRT



Style CRT



TO ORDER: Select size, length, and style of clamp. Select type and size of thread for outlet. Add list price for outlet to list price for clamp. Insert the letter "T" into the Catalog Number and add Tap Size to the end of the Catalog Number. Consult catalog or factory for specifications or application information.

EXAMPLE: A single section, stainless steel clamp for 6" D.I. Pipe, 12" in length with 3/4 I.P. Outlet would be **CRT1-0724-12-3/4IP**

List Price = \$ 251.00 + \$ 62.00 = \$ 313.00 (List price for CRT1-0724-12-3/4IP)

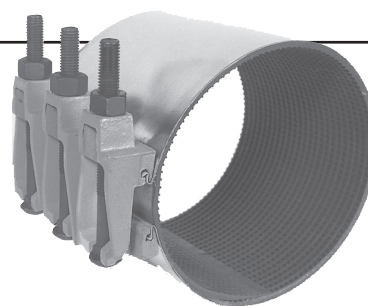
MATERIAL SPECIFICATIONS

Shell: T304 SST

Gasket: SBR (other materials available upon request)

Fasteners: Corrosion Resistant, High Strength, Low Alloy Steel; 5/8 UNC, Rolled Thread, Track Head Bolts; Heavy Hex Nuts (Stainless steel available upon request, see price adders below.)

Lugs: Ductile Iron



Nominal Pipe Size (Inches)	Clamp O.D. Range (Inches)	Catalog Number	List Price							
			5.0"	7.5"	10.0"	12.5"	15.0"	20.0"	25.0"	30.0"
2	2.32-2.63	CDR1-0263-Length	90.00	110.00	138.00	170.00	202.00	—	—	—
2 1/4	2.57-2.87	CDR1-0287-Length	91.00	112.00	141.00	172.00	207.00	—	—	—
2 1/4-2 1/2	2.70-3.00	CDR1-0300-Length	92.00	113.00	143.00	175.00	211.00	—	—	—
3	2.95-3.25	CDR1-0325-Length	114.00	133.00	176.00	211.00	247.00	—	—	—
	3.40-3.70	CDR1-0370-Length								
3 & 4	3.70-4.00	CDR1-0400-Length	116.00	135.00	181.00	213.00	248.00	—	—	—
4	4.45-4.75	CDR1-0475-Length	118.00	136.00	184.00	216.00	252.00	343.00	496.00	553.00
	4.75-5.15	CDR1-0515-Length								
4 & 5	4.95-5.35	CDR1-0535-Length	124.00	142.00	186.00	241.00	260.00	350.00	515.00	590.00
	5.20-5.60	CDR1-0560-Length								
6	5.95-6.35	CDR1-0635-Length	144.00	175.00	229.00	277.00	333.00	418.00	526.00	602.00
	6.55-6.95	CDR1-0695-Length								
	6.84-7.24	CDR1-0724-Length								
	7.05-7.45	CDR1-0745-Length								
8	7.45-7.85	CDR1-0785-Length	169.00	195.00	237.00	296.00	348.00	456.00	579.00	695.00
	7.95-8.35	CDR1-0835-Length								
	8.59-8.99	CDR1-0899-Length								
	9.00-9.40	CDR1-0940-Length								
8 & 10	9.30-9.70	CDR1-0970-Length	180.00	208.00	255.00	318.00	372.00	484.00	642.00	834.00
	9.75-10.15	CDR1-1015-Length								
10	10.65-11.05	CDR1-1105-Length	—	246.00	314.00	386.00	457.00	599.00	777.00	960.00
	11.04-11.44	CDR1-1144-Length								
	11.35-11.75	CDR1-1175-Length								
	11.75-12.15	CDR1-1215-Length								
12	11.95-12.35	CDR1-1235-Length	—	271.00	345.00	444.00	509.00	687.00	916.00	1,113.00
	12.65-13.05	CDR1-1305-Length								
	13.10-13.50	CDR1-1350-Length								
	13.40-13.80	CDR1-1380-Length								
12 & 14	13.70-14.10	CDR1-1410-Length	—	283.00	354.00	453.00	522.00	708.00	955.00	1,153.00
	14.00-14.40	CDR1-1440-Length								
Number of Bolts			2	3	4	5	6	8	10	12
ADD TO LIST PRICE OF EACH CLAMP FOR STAINLESS STEEL NUTS & BOLTS			22.00	33.00	44.00	55.00	66.00	88.00	110.00	132.00

Conductivity Strips available for \$12.00 per unit, add on to NET price.

NOTE: Other pipe O.D. ranges and lengths not listed are available upon request. For higher pressures, clamp length should be equal to or longer than the O.D. of the pipe.

TO ORDER: Determine desired range and length, then select corresponding Catalog Number.

EXAMPLE: A single section stainless steel clamp, 15" in length for 10" D.I. Pipe would be **CDR1-1144-15**.

MATERIAL SPECIFICATIONS

Shell: T304 SST

Gasket: SBR (other materials available upon request)

Fasteners: Corrosion Resistant, High Strength, Low Alloy Steel; 5/8 UNC, Rolled Thread, Track Head Bolts; Heavy Hex Nuts (Stainless steel available upon request, see price adders below.)

Lugs: Ductile Iron



WATER QUALITY
ANSI/NSF 61 23°C
DRINKING WATER
SYSTEM COMPONENTS
73KM



Nominal Pipe Size (Inches)	Clamp O.D. Range (Inches)	Catalog Number	List Price					
			7.5"	10.0"	12.5"	15.0"	20.0"	30.0"
4	4.44-5.26	CDR2-0526-Length	193.00	232.00	290.00	335.00	489.00	734.00
	4.75-5.57	CDR2-0557-Length						
6	6.58-7.36	CDR2-0736-Length	209.00	258.00	322.00	386.00	538.00	853.00
	6.84-7.64	CDR2-0764-Length						
8	7.60-8.40	CDR2-0840-Length	232.00	286.00	361.00	436.00	600.00	972.00
	8.99-9.79	CDR2-0979-Length						
10	10.70-11.50	CDR2-1150-Length	286.00	351.00	444.00	526.00	755.00	1,170.00
	11.06-11.65	CDR2-1165-Length						
	11.40-12.20	CDR2-1220-Length						
14	12.70-13.50	CDR2-1350-Length	346.00	417.00	547.00	704.00	846.00	1,446.00
	13.15-13.95	CDR2-1395-Length						
	13.60-14.40	CDR2-1440-Length						
	13.85-14.65	CDR2-1465-Length						
14	14.38-15.18	CDR2-1518-Length	—	610.00	746.00	881.00	1,120.00	1,806.00
	15.07-15.87	CDR2-1587-Length						
16	15.92-16.67	CDR2-1667-Length	—	637.00	792.00	947.00	1,276.00	1,946.00
	16.56-17.31	CDR2-1731-Length						
	17.15-17.90	CDR2-1790-Length						
18	17.82-18.57	CDR2-1857-Length	—	674.00	837.00	999.00	1,344.00	2,049.00
	18.41-19.21	CDR2-1921-Length						
	19.23-19.98	CDR2-1998-Length						
20	19.90-20.86	CDR2-2086-Length	—	793.00	976.00	1,158.00	1,463.00	2,228.00
	20.70-21.45	CDR2-2145-Length						
	21.52-22.27	CDR2-2227-Length						
	22.12-22.87	CDR2-2287-Length						
	22.90-23.65	CDR2-2365-Length						
Number of Bolts			6	8	10	12	16	24
ADD TO LIST PRICE OF EACH CLAMP FOR STAINLESS STEEL NUTS & BOLTS			66.00	88.00	110.00	132.00	176.00	264.00

Conductivity Strips available for \$12.00 per unit, add on to NET price.

NOTE: Other pipe O.D. ranges and lengths not listed are available upon request. For higher pressures, clamp length should be equal to or longer than the O.D. of the pipe.

TO ORDER: Determine desired range and length, then select corresponding Catalog Number.

EXAMPLE: A double section stainless steel clamp, 15" in length for 8" D.I. Pipe would be **CDR2-0979-15**.

MATERIAL SPECIFICATIONS

Shell: T304 SST

Gasket: SBR (other materials available upon request)

Fasteners: Corrosion Resistant, High Strength, Low Alloy Steel; 5/8 UNC, Rolled Thread, Track Head Bolts; Heavy Hex Nuts (Stainless steel available upon request, see price adders below.)

Lugs: Ductile Iron



WATER QUALITY
ANSI/NSF 61 23°C
DRINKING WATER
SYSTEM COMPONENTS
73KM



Nominal Pipe Size (Inches)	Clamp O.D. Range (Inches)	Catalog Number	List Price					
			10.0"	12.5"	15.0"	20.0"	25.0"	30.0"
10	11.04-12.24	CDR3-1224-Length	524.00	654.00	960.00	—	—	—
12 - 14	13.14-14.34	CDR3-1434-Length	531.00	657.00	1,012.00	—	—	—
	13.65-14.85	CDR3-1485-Length	682.00	847.00	1,181.00	—	—	—
14 - 16	14.85-16.05	CDR3-1605-Length	686.00	859.00	1,188.00	—	—	—
	15.92-17.12	CDR3-1712-Length	762.00	934.00	1,196.00	—	—	—
16 - 18	17.15-18.35	CDR3-1835-Length	766.00	970.00	1,202.00	—	—	—
	18.46-19.66	CDR3-1966-Length	837.00	1,025.00	1,246.00	—	—	—
18 - 20	19.45-20.85	CDR3-2085-Length	979.00	1,030.00	1,251.00	1,694.00	2,143.00	2,858.00
	21.52-22.72	CDR3-2272-Length	992.00	1,129.00	1,291.00	1,749.00	2,380.00	2,944.00
20 - 24	23.28-24.48	CDR3-2448-Length	1,072.00	1,310.00	1,447.00	1,942.00	2,401.00	2,971.00
	24.38-25.58	CDR3-2558-Length	—	1,342.00	1,558.00	2,025.00	2,586.00	3,098.00
24	25.70-26.90	CDR3-2690-Length	—	1,360.00	1,627.00	2,118.00	2,750.00	3,239.00
24 - 27	26.48-27.68	CDR3-2768-Length	—	1,400.00	1,764.00	2,211.00	2,899.00	3,382.00
	27.65-28.85	CDR3-2885-Length	—	1,500.00	1,848.00	2,317.00	3,051.00	3,544.00
	28.73-29.93	CDR3-2993-Length	—	1,551.00	2,068.00	2,432.00	3,152.00	3,718.00
24 - 30	29.62-30.82	CDR3-3082-Length	—	1,720.00	2,081.00	2,554.00	3,517.00	3,905.00
30	31.22-32.42	CDR3-3242-Length	—	1,962.00	2,207.00	2,697.00	3,963.00	4,123.00
Number of Bolts			12	15	18	24	30	36
ADD TO LIST PRICE OF EACH CLAMP FOR STAINLESS STEEL NUTS & BOLTS			132.00	165.00	198.00	264.00	330.00	396.00

Conductivity Strips available for \$12.00 per unit, add on to NET price.

NOTE: Other pipe O.D. ranges and lengths not listed are available upon request. For higher pressures, clamp length should be equal to or longer than the O.D. of the pipe.

TO ORDER: Determine desired range and length, then select corresponding Catalog Number.

EXAMPLE: A triple section stainless steel clamp, 15" in length for 10" D.I. Pipe would be **CDR3-1224-15**.

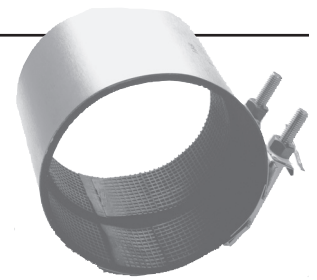
MATERIAL SPECIFICATIONS

Shell/Lugs: T304 SST

Gasket: SBR

Fasteners: T304 SST, 5/8 UNC, Rolled Thread;
Fluoropolymer Coated, Heavy Hex Nut

Washers/Washer Plates: T304 SST



Nominal Pipe Size (Inches)	Clamp O.D. Range (Inches)	Catalog Number	List Price			
			6	8	12	16
2	2.38	CCLC-0238-Length	197.00	207.00	259.00	304.00
2-1/2	2.88	CCLC-0288-Length	207.00	214.00	276.00	320.00
3	3.50	CCLC-0350-Length	214.00	229.00	277.00	323.00
4	4.50	CCLC-0450-Length	237.00	242.00	288.00	334.00
6	6.63	CCLC-0663-Length	240.00	251.00	318.00	370.00
8	8.63	CCLC-0863-Length	262.00	313.00	355.00	413.00

NOTES: Standard CCLC designed for Class 160 and SDR 26 PVC pipe. Gasket step is limited to one (1) extra layer, which is 0.25" in height (which accommodates a collar up to 0.50" larger than the barrel O.D.). Any size requested that is not on the chart above is **not recommended** and **non-returnable**.

TO ORDER: Determine desired range and length, then select corresponding Catalog Number. Consult catalog or factory for specification or application information.

EXAMPLE: A collar leak clamp, 8" in length for 8" IPS pipe would be **CCLC-0863-08**.

MATERIAL SPECIFICATIONS

NSF/ANSI 61 Compliant

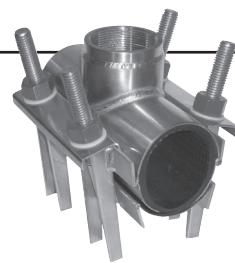
Shell/Lugs: T304 SST

Fasteners: T304 SST, 5/8 UNC, Rolled Thread; Fluoropolymer Coated, Heavy Hex Nut

Outlet: T304 SST

Gaskets: Virgin SBR (other materials available upon request)

Washers/Washer Plate: T304 SST



Nominal Pipe Size (Inches)	O.D. Range (Inches)	Catalog Number	Tap Size IP or CC thread	List Price
2	2.13	CTT-0213-Tap	1-1/2" - 2" I.P.; 1-1/2" C.C.	644.00
	2.38	CTT-0238-Tap	1-1/2" - 2" I.P.; 1-1/2" - 2" C.C.	
2-1/2	2.63	CTT-0263-Tap	2" - 2-1/2" I.P.; 1-1/2" - 2" C.C.	655.00
	2.88	CTT-0288-Tap		
3	3.13	CTT-0313-Tap	2" - 2-1/2" I.P.; 1-1/2" - 2" C.C.	673.00
	3.50	CTT-0350-Tap		
4	4.13	CTT-0413-Tap	2-1/2" I.P.; 2" C.C.	697.00
	4.50	CTT-0450-Tap	3" - 4" I.P.	
	4.80	CTT-0480-Tap		774.00

NOTE: Overall Length - 8". 250 psi Rated Working Pressure (RWP). Pressure rating may be application specific. Consult factory for specific applications.

Application: All stainless steel tapping sleeve for force mains. A tapping sleeve built for strength and long life, for new and existing pressure systems. A tee developed to handle smaller O.D. mains with wide range of tap options, all while withstanding the rigors of a pressure tap. (Tap sizes up to 2" C.C., 2-1/2" I.P., or 4" I.P. depending on Mains size.)

TO ORDER: Determine the desired O.D. of pipe for the Tiger Tee to fit on and choose appropriate Tap Code.

EXAMPLE: A Tiger Tee for 3" IPS pipe with a 2" IP tap would be: **CTT-0350-2IP**.

MATERIAL SPECIFICATIONS

NSF/ANSI 61 Compliant

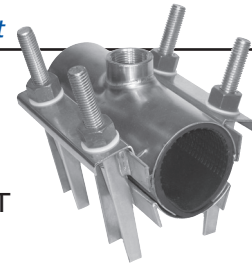
Shell/Lugs: T304 SST

Fasteners: T304 SST, 5/8 UNC, Rolled Thread; Fluoropolymer Coated, Heavy Hex Nut

Outlet: T304 SST

Washers/Washer Plate: T304 SST

Gaskets: Virgin SBR (other materials available upon request)



Nominal Pipe Size (Inches)	O.D. Range (Inches)	Catalog Number	Tap Size IP or CC thread	List Price
2	2.13	CTTL-0213-Tap	3/4" - 1" I.P.; 3/4" - 1" C.C.	261.00
	2.38	CTTL-0238-Tap	3/4" - 1-1/2" I.P.; 3/4" - 1-1/4" C.C.	
2-1/2	2.63	CTTL-0263-Tap	3/4" - 1-1/2" I.P.; 3/4" - 1-1/4" C.C.	281.00
	2.88	CTTL-0288-Tap		
3	3.13	CTTL-0313-Tap	3/4" - 1-1/2" I.P.; 3/4" - 1-1/4" C.C.	331.00
	3.50	CTTL-0350-Tap		
4	4.13	CTTL-0413-Tap	3/4" - 2" I.P.; 3/4" - 2" C.C.	489.00
	4.50	CTTL-0450-Tap		
	4.80	CTTL-0480-Tap		

NOTE: Overall Length - 8". 150 psi Rated Working Pressure (RWP). Pressure rating may be application specific. Consult factory for specific applications.

Application: All stainless steel tapping sleeve for force mains. A tapping sleeve built for strength and long life, for new and existing pressure systems. A tee developed to handle smaller O.D. mains with a range of tap options, all while withstanding the rigors of a pressure tap. (Tap sizes up to 1-1/2" I.P.).

TO ORDER: Determine the desired O.D. of pipe for the Tigger Tee to fit on and choose appropriate Tap.

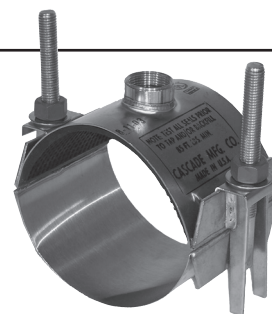
EXAMPLE: A Tigger Tee for 2" copper tubing with a 1" IP tap would be: **CTTL-0213-1IP**.

STYLE CS12

ALL STAINLESS STEEL SERVICE SADDLE
DOUBLE BAND - 5" WIDE

MATERIAL SPECIFICATIONS

Body / Outlet: T304 SST
Gasket: SBR (EPDM available) - Triple O-ring surrounded by full grid matt. Patents 6,173,967B1 & 6,588,767B2
Lugs / Washers / Washer Plates: T304 SST
Fasteners: T304 SST, 5/8 UNC, Rolled Thread; Fluoropolymer Coated, Heavy Hex Nut



One Saddle fits all types of pipe (AC, PVC, Steel, DI, and others)
 See Style PECS12 for HDPE applications

Nominal Pipe Size (Inches)	Saddle O.D. Range (Inches)	Catalog Number	List Price	
			3/4" - 1" I.P. or C.C.	
4	4.36 - 5.66	CS12-0566-Tap	133.00	For Larger Tap Options, see CS22's
5	5.40 - 6.70	CS12-0670-Tap	134.00	
6	6.43 - 7.73	CS12-0773-Tap	135.00	
8	8.52 - 9.82	CS12-0982-Tap	138.00	
10	10.65 - 11.95	CS12-1195-Tap	141.00	
12	12.70 - 14.00 13.10 - 14.40	CS12-1400-Tap CS12-1440-Tap	145.00	

Range: 1.30"

TO ORDER: Select Catalog Number and add Tap to the end of the Part Number.

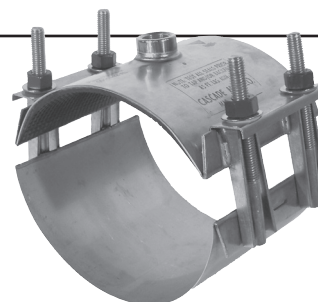
EXAMPLE: A 5" wide, double band stainless steel saddle clamp for 6" PVC with a 3/4" I.P. tap would be **CS12-0773-3/4IP**.

STYLE CS22

ALL STAINLESS STEEL SERVICE SADDLE
DOUBLE BAND - 8" WIDE

MATERIAL SPECIFICATIONS

Body / Outlet: T304 SST
Gasket: SBR (EPDM available) - Triple O-ring surrounded by full grid matt Patents 6,173,967B1 & 6,588,767B2
Lugs / Washers / Washer Plates: T304 SST
Fasteners: T304 SST, 5/8 UNC, Rolled Thread; Fluoropolymer Coated, Heavy Hex Nut



One Saddle fits all types of pipe (AC, PVC, Steel, DI, and others)
 See Style PECS22 for HDPE applications

Nominal Pipe Size (Inches)	Saddle O.D. Range (Inches)	Catalog Number	List Price	
			3/4" or 1" I.P. or C.C.	1-1/4", 1-1/2" or 2" I.P. or C.C.
4	4.36 - 5.66	CS22-0566-Tap	162.00	189.00
5	5.40 - 6.70	CS22-0670-Tap	165.00	196.00
6	6.43 - 7.73	CS22-0773-Tap	169.00	199.00
8	8.52 - 9.82	CS22-0982-Tap	175.00	208.00
10	10.65 - 11.95	CS22-1195-Tap	181.00	216.00
12	12.70 - 14.00 13.10 - 14.40	CS22-1400-Tap CS22-1440-Tap	191.00	225.00
14	14.00 - 15.30 15.40 - 16.70	CS22-1530-Tap CS22-1670-Tap	232.00	269.00
16	16.20 - 17.50 17.90 - 19.20	CS22-1750-Tap CS22-1920-Tap	250.00	285.00
18	19.20 - 20.40	CS22-2040-Tap	259.00	301.00
20	21.50 - 22.80	CS22-2280-Tap	275.00	311.00
24	25.70 - 27.00	CS22-2700-Tap	305.00	343.00

Range: 1.30"

NOTE: Other ranges, tap sizes and band widths available upon request.

TO ORDER: Select Catalog Number and add Tap to the end of the Part Number.

EXAMPLE: An 8" wide, double band stainless steel saddle clamp for 6" PVC with a 3/4" I.P. tap would be **CS22-0773-3/4IP**.

STYLE CSC1

ALL STAINLESS STEEL SERVICE SADDLE
SINGLE BAND - 5" WIDE

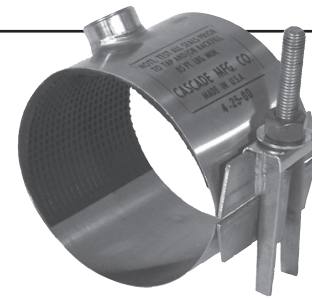
MATERIAL SPECIFICATIONS

Body / Outlet: T304 SST

Gasket: SBR (EPDM available) - Triple O-ring surrounded by full grid matt. Patents 6,173,967B1 & 6,588,767B2

Lugs / Washers / Washer Plate: T304 SST

Fasteners: T304 SST, 5/8 UNC, Rolled Thread; Fluoropolymer Coated, Heavy Hex Nut



WATER QUALITY
ANSI/NSF 61 23°C
DRINKING WATER
SYSTEM COMPONENTS
73KM



One Saddle fits all types of pipe (AC, PVC, Steel, DI, and others)

See Style *PECSC1* for HDPE applications

Nominal Pipe Size (Inches)	Saddle O.D. Range (Inches)	Catalog Number	List Price	
			3/4" - 1" I.P. or C.C.	
2	2.30 - 2.40	CSC1-0240-Tap	108.00	For Larger Tap Options, see CS22's
2-1/2	2.80 - 3.00	CSC1-0300-Tap	111.00	
3	3.35 - 3.65	CSC1-0365-Tap	114.00	
4	3.70 - 4.00	CSC1-0400-Tap	116.00	
	4.45 - 4.85	CSC1-0485-Tap		
5	4.95 - 5.35	CSC1-0535-Tap	116.00	
	5.36 - 5.80	CSC1-0580-Tap		
6	6.54 - 7.00	CSC1-0700-Tap	120.00	
	6.99 - 7.45	CSC1-0745-Tap		
8	8.62 - 9.08	CSC1-0908-Tap	125.00	

TO ORDER: Select Catalog Number and add Tap to the end of the Part Number.

EXAMPLE: A 5" wide, single band stainless steel saddle clamp for 6" CL200 PVC with a 1" C.C. tap would be **CSC1-0700-1CC**.

STYLE CSC2

ALL STAINLESS STEEL SERVICE SADDLE
SINGLE BAND - 8" WIDE

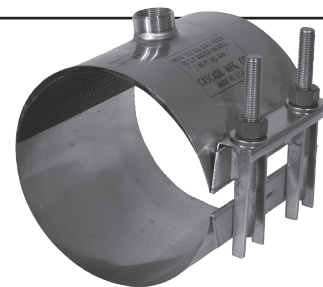
MATERIAL SPECIFICATIONS

Body / Outlet: T304 SST

Gasket: SBR (EPDM available) - Triple O-ring surrounded by full grid matt. Patents 6,173,967B1 & 6,588,767B2

Lugs / Washers / Washer Plate: T304 SST

Fasteners: T304 SST, 5/8 UNC, Rolled Thread; Fluoropolymer Coated, Heavy Hex Nut



WATER QUALITY
ANSI/NSF 61 23°C
DRINKING WATER
SYSTEM COMPONENTS
73KM



One Saddle fits all types of pipe (AC, PVC, Steel, DI, and others)

See Style *PECSC2* for HDPE applications

Nominal Pipe Size (Inches)	Saddle O.D. Range (Inches)	Catalog Number	List Price	
			3/4" - 1" I.P. or C.C.	
3	3.35 - 3.65	CSC2-0365-Tap	125.00	For Larger Tap Options, see CS22's
4	3.70 - 4.00	CSC2-0400-Tap	126.00	
	4.45 - 4.85	CSC2-0485-Tap		
5	4.95 - 5.35	CSC2-0535-Tap	128.00	
	5.36 - 5.80	CSC2-0580-Tap		
6	6.54 - 7.00	CSC2-0700-Tap	140.00	
	6.99 - 7.45	CSC2-0745-Tap		
8	8.62 - 9.08	CSC2-0908-Tap	141.00	
	9.21 - 9.67	CSC2-0967-Tap		
10	10.70 - 11.16	CSC2-1116-Tap	148.00	
	11.75 - 12.21	CSC2-1221-Tap		
12	12.74 - 13.21	CSC2-1321-Tap	153.00	
	14.00 - 14.47	CSC2-1447-Tap		

TO ORDER: Select Catalog Number and add Tap to the end of the Part Number.

EXAMPLE: An 8" wide, single band stainless steel saddle clamp for 6" CL200 PVC with a 1" C.C. tap would be **CSC2-0700-1CC**.

MATERIAL SPECIFICATIONS

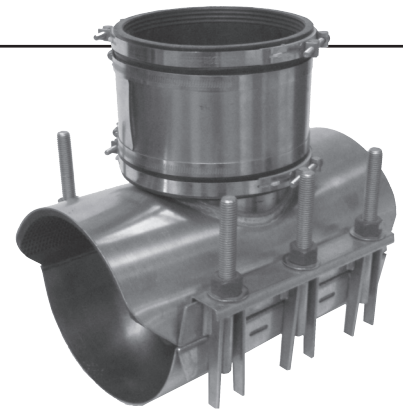
Body / Outlet: T304 SST

Gasket: SBR (EPDM available) - Full grid matt

Lugs / Washers / Washer Plates: T304 SST

Fasteners: T304 SST, 5/8 UNC, Rolled Thread;
Fluoropolymer Coated, Heavy Hex Nut

Sewer Tee to be used with non-shear rubber coupling (not included)



Nominal Pipe Size (Inches)	Inlet Size	Catalog Number	List Price
6	4	CSWRT-(Pipe OD)-04-RC	242.00
8	4	CSWRT-(Pipe OD)-04-RC	255.00
	6	CSWRT-(Pipe OD)-06-RC	345.00
10	4	CSWRT-(Pipe OD)-04-RC	265.00
	6	CSWRT-(Pipe OD)-06-RC	357.00
	8	CSWRT-(Pipe OD)-08-RC	471.00
12	4	CSWRT-(Pipe OD)-04-RC	271.00
	6	CSWRT-(Pipe OD)-06-RC	366.00
	8	CSWRT-(Pipe OD)-08-RC	482.00
	10	CSWRT-(Pipe OD)-10-RC	498.00
14	4	CSWRT-(Pipe OD)-04-RC	289.00
	6	CSWRT-(Pipe OD)-06-RC	390.00
	8	CSWRT-(Pipe OD)-08-RC	507.00
	10	CSWRT-(Pipe OD)-10-RC	523.00
	12	CSWRT-(Pipe OD)-12-RC	649.00
16	4	CSWRT-(Pipe OD)-04-RC	303.00
	6	CSWRT-(Pipe OD)-06-RC	410.00
	8	CSWRT-(Pipe OD)-08-RC	539.00
	10	CSWRT-(Pipe OD)-10-RC	556.00
	12	CSWRT-(Pipe OD)-12-RC	680.00

NOTE: No Rubber Coupling is supplied. Inlet O.D. will be sewer O.D.

TO ORDER: Select Catalog Number and specify the ***exact Pipe O.D.*** it is going on and the Inlet Size desired.

EXAMPLE: A stainless steel sewer Tee for 6" sewer pipe (O.D. = ø6.28") with a 4" inlet would be **CSWRT-0628-04-RC**.

MATERIAL SPECIFICATIONS

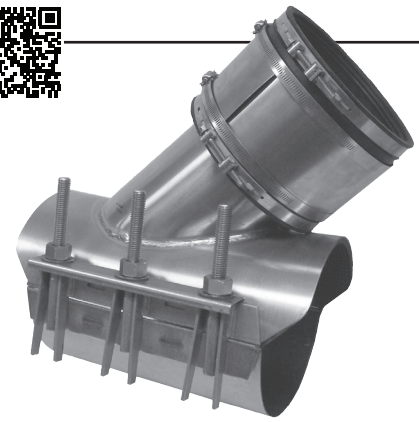
Body / Outlet: T304 SST

Gasket: SBR (EPDM available) - Full grid matt

Lugs / Washers / Washer Plates: T304 SST

Fasteners: T304 SST, 5/8 UNC, Rolled Thread;
Fluoropolymer Coated, Heavy Hex Nut

Sewer Wye to be used with non-shear rubber coupling (not included)



Nominal Pipe Size (Inches)	Inlet Size	Catalog Number	List Price
6	4	CSWRY-(Pipe OD)-04-RC	337.00
	6	CSWRY-(Pipe OD)-06-RC	459.00
8	4	CSWRY-(Pipe OD)-04-RC	361.00
	6	CSWRY-(Pipe OD)-06-RC	477.00
	8	CSWRY-(Pipe OD)-08-RC	598.00
10	4	CSWRY-(Pipe OD)-04-RC	374.00
	6	CSWRY-(Pipe OD)-06-RC	488.00
	8	CSWRY-(Pipe OD)-08-RC	610.00
	10	CSWRY-(Pipe OD)-10-RC	708.00
12	4	CSWRY-(Pipe OD)-04-RC	392.00
	6	CSWRY-(Pipe OD)-06-RC	507.00
	8	CSWRY-(Pipe OD)-08-RC	644.00
	10	CSWRY-(Pipe OD)-10-RC	754.00
	12	CSWRY-(Pipe OD)-12-RC	895.00
14	4	CSWRY-(Pipe OD)-04-RC	418.00
	6	CSWRY-(Pipe OD)-06-RC	544.00
	8	CSWRY-(Pipe OD)-08-RC	680.00
	10	CSWRY-(Pipe OD)-10-RC	796.00
	12	CSWRY-(Pipe OD)-12-RC	944.00

NOTE: No Rubber Coupling is supplied. Inlet O.D. will be sewer O.D.

TO ORDER: Select Catalog Number and specify the ***exact Pipe O.D.*** it is going on and the Inlet Size desired.

EXAMPLE: A stainless steel sewer Wye for 6" sewer pipe (O.D. = ø6.28") with a 4" inlet would be **CSWRY-0628-04-RC**.

STYLE CNS1

DUCTILE IRON BODY SERVICE SADDLE SINGLE STAINLESS STEEL STRAP

MATERIAL SPECIFICATIONS

Body: Ductile Iron - ASTM A536 (65-45-12)

Strap: T304 SST

Studs: 18-8 / T304 SST 5/8 UNC, Rolled Thread

Washers: T304 SST

Nuts: 18-8 / T304 SST, 5/8 UNC, Fluoropolymer Coated, Heavy Hex

Coating: Fusion Bonded Epoxy, NSF 61 Compliant

Gasket: EPDM



Nominal Pipe Size (Inches)	Actual Pipe O.D. Range (Inches)			Catalog Number	List Price	
	A IPS / CI	B CI / AC	C C900		3/4" thru 1" I.P. or C.C.	1-1/4" thru 2" I.P. or C.C.
† 2	2.35 - 2.56	—	—	CNS1-2A-Tap	60.00	—
3	3.50 only	—	—	CNS1-3A-Tap	70.00	76.00
4	4.50 - 5.15	4.80 - 5.40	4.80	CNS1-4 (Range A, B or C)-Tap	77.00	78.00
6	6.63 - 7.25	6.90 - 7.60	6.90	CNS1-6 (Range A, B or C)-Tap	83.00	86.00
8	8.63 - 9.30	9.05 - 9.65	9.05	CNS1-8 (Range A, B or C)-Tap	91.00	98.00
10	10.75 - 11.40	11.10 - 12.12	11.10	CNS1-10 (Range A, B or C)-Tap	114.00	121.00
12	12.75 - 13.50	13.20 - 14.40	13.20	CNS1-12 (Range A, B or C)-Tap	116.00	125.00

† - AVAILABLE WITH 3/4" - 1-1/4" I.P./C.C. or 1-1/2" I.P. TAPS ONLY

TO ORDER: Select Catalog Number using A, B, or C range and add Tap to the end of the Catalog Number.

EXAMPLE: An epoxy coated, single strap, ductile iron saddle for 6" D.I. pipe with a 1-1/2" C.C. tap would be **CNS1-6A-1.50CC**.

STYLE CNS2

DUCTILE IRON BODY SERVICE SADDLE DOUBLE STAINLESS STEEL STRAP

MATERIAL SPECIFICATIONS

Body: Ductile Iron - ASTM A536 (65-45-12)

Straps: T304 SST

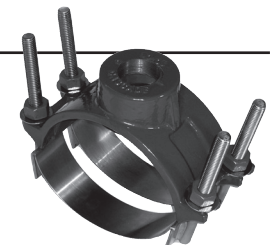
Studs: 18-8 / T304 SST, 5/8 UNC, Rolled Thread

Washers: T304 SST

Nuts: 18-8 / T304 SST, 5/8 UNC, Fluoropolymer Coated, Heavy Hex

Coating: Fusion Bonded Epoxy, NSF 61 Compliant

Gasket: EPDM



Nominal Pipe Size (Inches)	Actual Pipe O.D. Range (Inches)			Catalog Number	List Price	
	A IPS / CI	B CI / AC	C C900		3/4" thru 1" I.P. or C.C.	1-1/4" thru 2" I.P. or C.C.
3	3.50 only	—	—	CNS2-3A-Tap	103.00	109.00
4	4.50 - 5.15	4.80 - 5.40	4.80	CNS2-4 (Range A, B or C)-Tap	112.00	116.00
6	6.63 - 7.25	6.90 - 7.60	6.90	CNS2-6 (Range A, B or C)-Tap	124.00	130.00
8	8.63 - 9.30	9.05 - 9.65	9.05	CNS2-8 (Range A, B or C)-Tap	138.00	143.00
10	10.75 - 11.40	11.10 - 12.12	11.10	CNS2-10 (Range A, B or C)-Tap	170.00	173.00
12	12.75 - 13.50	13.20 - 14.40	13.20	CNS2-12 (Range A, B or C)-Tap	196.00	204.00

TO ORDER: Select Catalog Number using A, B, or C range and add Tap the end of the Catalog Number.

EXAMPLE: An epoxy coated, double strap, ductile iron saddle for 6" D.I. pipe with a 1-1/2" C.C. tap would be **CNS2-6A-1.50CC**.

MATERIAL SPECIFICATIONS

Body: Ductile Iron - ASTM A536 (65-45-12)

U-Bolt: High Strength, Low Alloy or A36 Steel (with Corrosion Resistant Plating); 5/8 UNC, Rolled Thread

Washers: Mild Steel (with Corrosion Resistant Plating)

Coating: Fusion Bonded Epoxy; NSF 61 Compliant

Gasket: EPDM

Nuts: Corten; 5/8 UNC, Heavy Hex



Nominal Pipe Size (Inches)	Actual Pipe O.D. Range (Inches)		Catalog Number	List Price	
	A IPS / CI	B CI / AC		3/4" thru 1" I.P. or C.C.	1-1/4" thru 2" I.P. or C.C.
† 2	2.35 - 2.56	—	CDS1-2A-Tap	54.00	—
3	3.50 (only)	—	CDS1-3A-Tap	47.00	53.00
4	4.50 - 5.15	4.80 - 5.40	CDS1-4 (Range A or B)-Tap	48.00	54.00
6	6.63 - 7.25	6.90 - 7.60	CDS1-6 (Range A or B)-Tap	53.00	60.00
8	8.63 - 9.30	9.05 - 9.65	CDS1-8 (Range A or B)-Tap	70.00	78.00
10	10.75 - 11.40	11.10 - 12.12	CDS1-10 (Range A or B)-Tap	84.00	95.00
12	12.75 - 13.50	13.20 - 14.40	CDS1-12 (Range A or B)-Tap	91.00	106.00

† - AVAILABLE WITH 3/4" - 1-1/4" I.P./C.C. or 1-1/2" I.P. TAPS ONLY.

NOTES: Not recommended for PVC Pipe. 1-1/2" & 2" Outlets are available in the Extended Range Saddles to accommodate rough barrel AC pipe.

TO ORDER: Select Catalog Number using A or B range and add Tap to the end of the Catalog Number.

EXAMPLE: An epoxy coated, single U-bolt, ductile iron saddle for 12" AC. pipe with a 1" C.C. tap would be **CDS1-12B-1.00CC**.

STYLE CDS2

DUCTILE IRON BODY SERVICE SADDLE DOUBLE U-BOLT

MATERIAL SPECIFICATIONS

Body: Ductile Iron - ASTM A536 (65-45-12)

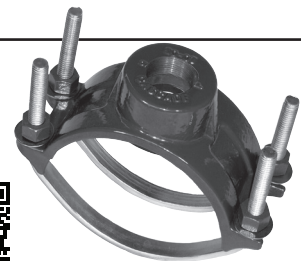
U-Bolts: High Strength, Low Alloy or A36 Steel (with Corrosion Resistant Plating); 5/8 UNC, Rolled Thread

Washers: Mild Steel (with Corrosion Resistant Plating)

Coating: Fusion Bonded Epoxy; NSF 61 Compliant

Gasket: EPDM

Nuts: Corten; 5/8 UNC, Heavy Hex



Nominal Pipe Size (Inches)	Actual Pipe O.D. Range (Inches)		Catalog Number	List Price	
	A IPS / CI	B CI / AC		3/4" thru 1" I.P. or C.C.	1-1/4" thru 2" I.P. or C.C.
3	3.50 only	—	CDS2-3A-Tap	60.00	66.00
4	4.50 - 5.15	4.80 - 5.40	CDS2-4 (Range A or B)-Tap	68.00	74.00
6	6.63 - 7.25	6.90 - 7.60	CDS2-6 (Range A or B)-Tap	76.00	80.00
8	8.63 - 9.30	9.05 - 9.65	CDS2-8 (Range A or B)-Tap	83.00	89.00
10	10.75 - 11.40	11.10 - 12.12	CDS2-10 (Range A or B)-Tap	100.00	107.00
12	12.75 - 13.50	13.20 - 14.40	CDS2-12 (Range A or B)-Tap	120.00	127.00

NOTES: Not recommended for PVC Pipe. 1-1/2" & 2" Outlets are available in the Extended Range Saddles to accommodate rough barrel AC pipe.

TO ORDER: Select Catalog Number using A or B range and add Tap to the end of the Catalog Number.

EXAMPLE: An epoxy coated, double bale, ductile iron saddle for 12" A.C. pipe with a 1" C.C. tap would be **CDS2-12B-1.00CC**.

MATERIAL SPECIFICATIONS

Body: Ductile Iron - ASTM A536 (65-45-12)

Coating: Fusion Bonded Epoxy, NSF 61 Compliant

Straps: T304 SST

Gasket: EPDM

Studs: 18-8 / T304 SST, 5/8 UNC, Rolled Thread

Washers: T304 SST / Ductile Iron

Nuts: 18-8 / T304 SST 5/8 UNC, Fluoropolymer Coated, Heavy Hex



Nominal Pipe Size (Inches)	O.D. Range (Inches)	Catalog Number	List Price	
			3/4" thru 1" I.P. or C.C.	1-1/4" thru 2" I.P. or C.C.
14	14.70 - 15.70	CDS-LD-1570-Tap	257.00	263.00
14 & 16	15.80 - 17.26	CDS-LD-1726-Tap	259.00	265.00
16 & 18	17.30 - 19.00	CDS-LD-1900-Tap	282.00	292.00
18 & 20	19.05 - 20.20	CDS-LD-2020-Tap	283.00	293.00
20	20.25 - 21.25	CDS-LD-2125-Tap	348.00	358.00
	21.30 - 22.30	CDS-LD-2230-Tap		
	22.35 - 23.35	CDS-LD-2335-Tap		
24	22.90 - 23.90	CDS-LD-2390-Tap	420.00	428.00
	23.75 - 24.75	CDS-LD-2475-Tap		
	24.60 - 25.60	CDS-LD-2560-Tap		
27	25.65 - 26.50	CDS-LD-2650-Tap	442.00	446.00
	26.55 - 27.55	CDS-LD-2755-Tap		
	27.60 - 28.55	CDS-LD-2855-Tap		
30	29.60 - 30.50	CDS-LD-3050-Tap	463.00	472.00

TO ORDER: Select Catalog Number using O.D. range and add Tap Code to the end of the Catalog Number.

EXAMPLE: An epoxy coated, double strap, large O.D. ductile iron saddle for 16" D.I. pipe with a 2" C.C. tap would be **CDS-LD-1900-200C**.

MATERIAL SPECIFICATIONS

Body & Outlet: Fabricated Steel ASTM A36

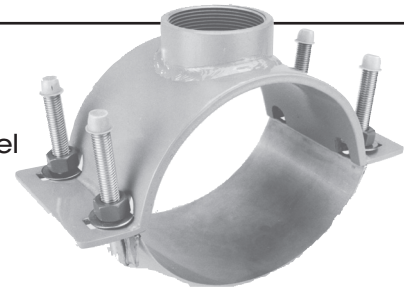
Finish: Epoxy
(NSF/ANSI 61 compliant)

Gaskets: EPDM

Band: T304 Stainless Steel

Bolts: 18-8 / T304 Stainless Steel;
5/8 UNC, Rolled Thread

Nuts: 18-8 SST, Fluoropolymer Coated,
Heavy Hex



Nominal Pipe Size (Inches)	O.D. Range (Inches)	Catalog Number	List Price	
			3" I.P.	4" I.P.
6	6.63	CFS-0663-Tap	514.00	614.00
	6.90	CFS-0690-Tap		
8	8.63	CFS-0863-Tap	538.00	638.00
	9.05	CFS-0905-Tap		
10	10.75	CFS-1075-Tap	580.00	682.00
	11.10	CFS-1110-Tap		
12	12.75	CFS-1275-Tap	617.00	718.00
	13.20	CFS-1320-Tap		
14	14.00	CFS-1400-Tap	668.00	771.00
	15.30	CFS-1530-Tap		
16	16.00	CFS-1600-Tap	718.00	820.00
	17.40	CFS-1740-Tap		
18	17.80	CFS-1780-Tap	789.00	887.00
	18.00	CFS-1800-Tap		
20	19.50	CFS-1950-Tap	810.00	916.00
	20.00	CFS-2000-Tap		
24	21.60	CFS-2160-Tap	897.00	1,001.00
	24.00	CFS-2400-Tap		
30	25.80	CFS-2580-Tap	914.00	1,019.00
	30.00	CFS-3000-Tap		
	32.00	CFS-3200-Tap		

TO ORDER: Select Catalog Number using O.D. range and add Tap Code to the end of the Catalog Number.

EXAMPLE: A fabricated steel saddle for 6" D.I. pipe with a 3" I.P. tap would be **CFS-0690-300I**.

MATERIAL SPECIFICATIONS

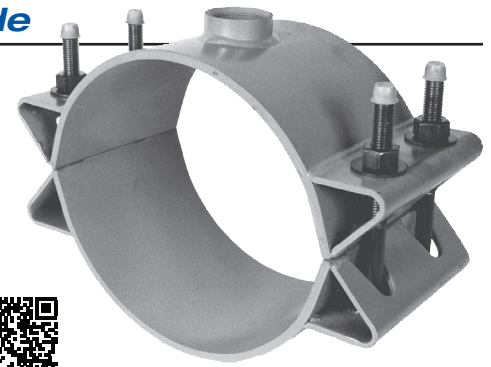
8" wide

Body & Outlet: Fabricated Steel ASTM A36

Gaskets: EPDM

Fasteners: Corrosion Resistant, High Strength, Low Alloy Steel; 3/4 UNC, Rolled Thread, Track Head Bolts; Heavy Hex Nuts (Stainless steel available upon request, see price adders below.)

Finish: Epoxy (NSF/ANSI 61 compliant)



Nominal Pipe Size (Inches)	O.D. Range (Inches)	Catalog Number	List Price		
			2" I.P.	3" I.P.	4" I.P.
6	6.63	CFT-TO-0663-Tap	490.00	633.00	725.00
	6.90	CFT-TO-0690-Tap			
8	8.63	CFT-TO-0863-Tap	506.00	641.00	752.00
	9.05	CFT-TO-0905-Tap			
10	10.75	CFT-TO-1075-Tap	550.00	721.00	808.00
	11.10	CFT-TO-1110-Tap			
12	12.75	CFT-TO-1275-Tap	579.00	735.00	822.00
	13.20	CFT-TO-1320-Tap			
14	14.59 - 15.08	CFT-TO-1508-Tap	612.00	743.00	869.00
	15.23 - 15.80	CFT-TO-1580-Tap			
	16.30 - 16.73	CFT-TO-1673-Tap			
16	17.33 - 17.87	CFT-TO-1787-Tap	629.00	759.00	886.00
	18.62 - 19.19	CFT-TO-1919-Tap			
18	19.41 - 20.01	CFT-TO-2001-Tap	721.00	853.00	939.00
	20.93 - 21.57	CFT-TO-2157-Tap			
20	21.51 - 22.15	CFT-TO-2215-Tap	740.00	870.00	956.00
	23.46 - 24.16	CFT-TO-2416-Tap			
24	25.71 - 26.41	CFT-TO-2641-Tap	801.00	932.00	1,019.00
	28.14 - 28.84	CFT-TO-2884-Tap			

NOTE: Prices shown are for Low Alloy bolts. **Stainless steel bolts** are available at an additional cost of \$125.00 added to the List Price of each Saddle.

TO ORDER: Select Catalog Number using O.D. range and add Tap Code to the end of the Catalog Number.

EXAMPLE: An epoxy coated, fabricated steel saddle for 8" D.I. pipe with a 2" I.P. tap would be **CFT-TO-0905-200IP**.

STYLE CCAP

MATERIAL SPECIFICATIONS

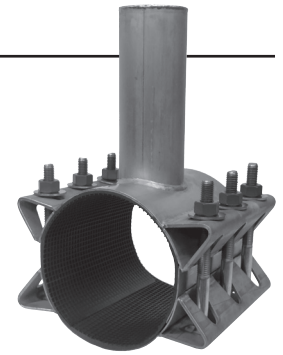
Shell/Lugs: T304 SST

Washers/Washer Plate:
T304 SST

Cap: T304 SST

Gaskets: Virgin SBR (other materials available upon request) *Branch Gasket Patent 6,173,967B1*

Fasteners: T304 SST, 5/8 UNC, Rolled Thread;
Fluoropolymer Coated Heavy Hex Nut



Nominal Pipe Size (Inches)	O.D. Range (Inches)	Catalog Number	Cap Size	
			03EX	05EX
4	4.40 - 4.60	CCAP2-0460	933.00	-
	4.70 - 4.90	CCAP2-0490		
	4.80 - 5.00	CCAP2-0500		
	5.10 - 5.30	CCAP2-0530		
	5.20 - 5.40	CCAP2-0540		
6	6.60 - 7.00	CCAP2-0700	943.00	1,039.00
	6.90 - 7.30	CCAP2-0730		
	7.10 - 7.50	CCAP2-0750		
	7.50 - 7.90	CCAP2-0790		
8	7.90 - 8.30	CCAP2-0830	1,060.00	1,155.00
	8.35 - 8.75	CCAP2-0875		
	8.63 - 9.05	CCAP2-0905		
	8.95 - 9.35	CCAP2-0935		
	9.20 - 9.60	CCAP2-0960		
10	10.50 - 10.90	CCAP2-1090	1,166.00	1,261.00
	10.75 - 11.10	CCAP2-1110		
	11.00 - 11.40	CCAP2-1140		
	11.40 - 11.80	CCAP2-1180		
	11.80 - 12.20	CCAP2-1220		
12	12.50 - 12.90	CCAP2-1290	1,177.00	1,272.00
	13.00 - 13.40	CCAP2-1340		
	13.20 - 13.60	CCAP2-1360		
	13.40 - 13.80	CCAP2-1380		
	14.00 - 14.40	CCAP2-1440		
14	15.10 - 15.50	CCAP2-1550	1,304.00	1,399.00
	15.40 - 15.80	CCAP2-1580		
	15.80 - 16.20	CCAP2-1620		
	16.38 - 16.78	CCAP2-1678		
16	17.20 - 17.60	CCAP2-1760	1,336.00	1,399.00
	17.40 - 17.80	CCAP2-1780		
	17.76 - 18.16	CCAP2-1816		
	18.40 - 18.80	CCAP2-1880		
	18.60 - 19.00	CCAP2-1900		
18	18.80 - 19.20	CCAP2-1920	1,442.00	1,537.00
	19.30 - 19.70	CCAP2-1970		
	19.80 - 20.20	CCAP2-2020		
	21.00 - 21.40	CCAP2-2140		
20	21.40 - 21.80	CCAP2-2180	1,622.00	1,717.00
	21.90 - 22.30	CCAP2-2230		
	22.10 - 22.50	CCAP2-2250		
25	23.20 - 23.60	CCAP2-2360	1,675.00	1,770.00
	25.60 - 26.00	CCAP2-2600		
	26.10 - 26.50	CCAP2-2650		
	27.90 - 28.30	CCAP2-2830		

-03EX covers Corporation Stop sizes 1/2" through 1"

-05EX covers Corporation Stop sizes 1-1/4" through 2"

TO ORDER: Select Catalog Number using O.D. range and add Tap Code to the end of the Catalog Number.

EXAMPLE: A corp cap saddle for 6" D.I. pipe with a 1" I.P. corp. tap would be **CCAP2-0700-03EX**.

MATERIAL SPECIFICATIONS

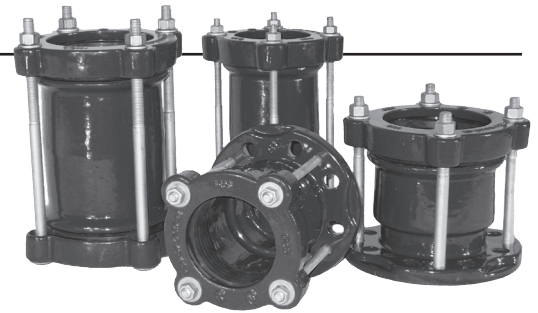
Barrel & End Rings: Ductile Iron

Finish: Epoxy (NSF/ANSI 61 compliant)

Gaskets: EPDM (No cutting required)

Fasteners: Mild Steel, Corrosion Resistant Plating;
(Stainless Steel available)

Style CRCER



Style CRFAER

Nominal Pipe Size (Inches)	Pipe OD Ranges		Catalog Number	Pipe Types	Weight (Lbs.)	List Price	
	(Inches)	(mm)				Low Alloy Bolt (CRCER)	S.S. Bolts (CRCER-SS)
2	1.69 - 2.52	43 - 65	CRCER-0200	PVC, CI, Steel	14	118.00	280.00
2-1/2	2.48 - 3.31	63 - 85	CRCER-0250	PVC, Steel	17	158.00	320.00
3	3.46 - 4.33	88 - 110	CRCER-0300	PVC, DI, AC, CI, Steel	22	169.00	331.00
4	4.49 - 5.59	115 - 142	CRCER-0400	PVC, DI, AC, CI, Steel	29	245.00	407.00
6	6.22 - 7.56	158 - 193	CRCER-0600	PVC, DI, AC, CI, Steel	46	397.00	559.00
8	8.58 - 9.92	218 - 252	CRCER-0800	PVC, DI, AC, CI, Steel	54	498.00	660.00
10	10.71 - 12.17	273 - 310	CRCER-1000	PVC, DI, AC, CI, Steel	71	750.00	993.00
12	12.72 - 14.41	324 - 367	CRCER-1200	PVC, DI, AC, CI, Steel	82	859.00	1,102.00

NOTE: To use stainless steel hardware, use the CRCER-SS pricing.

TO ORDER: Select Catalog Number using nominal pipe size.

EXAMPLE: A ductile iron coupling for 8" D.I. pipe would be **CRCER-0800**.

MATERIAL SPECIFICATIONS

Barrel & End Ring: Ductile Iron

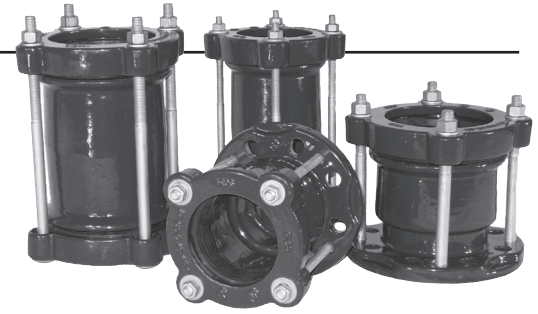
Flange: Ductile Iron (ANSI, BS, & DIN all in one flange design)

Finish: Epoxy (NSF/ANSI 61 compliant)

Gaskets: EPDM (No cutting required)

Fasteners: Mild Steel, Corrosion Resistant Plating;(Stainless Steel available)

Style CR CER



Style CRFAER

Nominal Pipe Size (Inches)	Pipe OD Ranges		Catalog Number	Pipe Types	Weight (Lbs.)	List Price	
	(Inches)	(mm)				Low Alloy Bolt (CRFAER)	S.S. Bolts (CRFAER-SS)
2	1.69 - 2.52	43 - 65	CRFAER-0200	PVC, CI, Steel	9	100.00	262.00
2-1/2	2.48 - 3.31	63 - 85	CRFAER-0250	PVC, Steel	12	119.00	281.00
3	3.46 - 4.33	88 - 110	CRFAER-0300	PVC, DI, AC, CI, Steel	17	158.00	320.00
4	4.49 - 5.59	115 - 142	CRFAER-0400	PVC, DI, AC, CI, Steel	25	228.00	390.00
6	6.22 - 7.56	158 - 193	CRFAER-0600	PVC, DI, AC, CI, Steel	39	385.00	547.00
8	8.58 - 9.92	218 - 252	CRFAER-0800	PVC, DI, AC, CI, Steel	58	502.00	664.00
10	10.71 - 12.17	273 - 310	CRFAER-1000	PVC, DI, AC, CI, Steel	71	778.00	1,021.00
12	12.72 - 14.41	324 - 367	CRFAER-1200	PVC, DI, AC, CI, Steel	86	870.00	1,113.00

NOTE: To use stainless steel hardware, use the CRFAER-SS pricing.

TO ORDER: Select Catalog Number using nominal pipe size.

EXAMPLE: A ductile iron flange adapter for 2" steel pipe would be **CRFAER-0200**.

MATERIAL SPECIFICATIONS

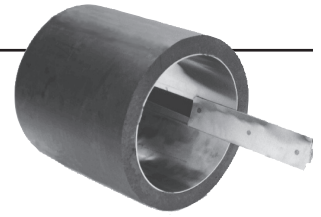
Shell: T304 Stainless Steel

Wedge (when applicable):

T304 Stainless Steel

U.S. Patent 6,095,197

Stiffeners smaller than 4" are 6" long, per Cascade's standard. Stiffeners 4" or larger are 8" long. Larger sizes available upon request.



Nominal Pipe Size (Inches)	IPS Ave. Inside Dia. (Inches)	Catalog Number	SDR #	List Price
† 2	1.686	CPS-2IPS	7.3	48.00
	1.815		9	
	1.917		11	
	2.002		13.5	
	2.051		15.5	
	2.078		17	
3	2.485	CPS-3IPS	7.3	71.00
	2.675		9	
	2.826		11	
	2.950		13.5	
	3.021		15.5	
	3.063		17	
4	3.194	CPS-4IPS	7.3	83.00
	3.440		9	
	3.633		11	
	3.794		13.5	
	3.885		15.5	
	3.938		17	
6	4.046	CPS-6IPS	21	90.00
	4.700		7.3	
	5.065		9	
	5.349		11	
	5.584		13.5	
	5.720		15.5	
8	5.798	CPS-8IPS	17	108.00
	5.957		21	
	6.084		26	
	6.193		32.5	
	6.119		7.3	
	6.594		9	
10	6.963	CPS-10IPS	11	139.00
	7.270		13.5	
	7.446		15.5	
	7.550		17	
	7.754		21	
	7.921		26	
10	8.063	CPS-10IPS	32.5	139.00
	7.627		7.3	
	8.219		9	
	8.679		11	
	9.062		13.5	
	9.279		15.5	
10	9.410	CPS-10IPS	17	139.00
	9.665		21	
	9.874		26	
	10.048		32.5	

Nominal Pipe Size (Inches)	IPS Ave. Inside Dia. (Inches)	Catalog Number	SDR #	List Price
12	9.046	CPS-12IPS	7.3	170.00
	9.746		9	
	10.293		11	
	10.749		13.5	
	11.005		15.5	
	11.160		17	
12	11.463	CPS-12IPS	21	170.00
	11.711		26	
	11.919		32.5	
	9.934		7.3	
	10.701		9	
	11.301		11	
14	11.802	CPS-14IPS	13.5	263.00
	12.086		15.5	
	12.253		17	
	12.586		21	
	12.859		26	
	13.086		32.5	
16	11.353	CPS-16IPS	7.3	322.00
	12.231		9	
	12.915		11	
	13.488		13.5	
	13.812		15.5	
	14.005		17	
16	14.385	CPS-16IPS	21	322.00
	14.696		26	
	14.957		32.5	
	12.772		7.3	
	13.760		9	
	14.532		11	
18	15.174	CPS-18IPS	13.5	354.00
	15.539		15.5	
	15.755		17	
	16.183		21	
	16.533		26	
	16.826		32.5	
20	14.191	CPS-20IPS	7.3	405.00
	15.289		9	
	16.146		11	
	16.860		13.5	
	17.265		15.5	
	17.507		17	
20	17.982	CPS-20IPS	21	405.00
	18.370		26	
	18.696		32.5	

† - One Piece Stiffener

TO ORDER: Select Catalog Number using nominal pipe size.

EXAMPLE: A stiffening insert for 8" I.P.S. - SDR11 pipe would be **CPS-8IPS-11**.

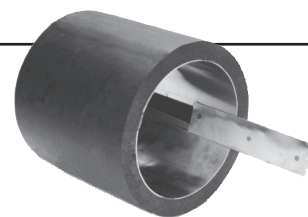
MATERIAL SPECIFICATIONS

Shell: T304 Stainless Steel

Wedge (when applicable):

T304 Stainless Steel

U.S. Patent 6,095,197



Stiffeners smaller than 4" are 6" long, per Cascade's standard. Stiffeners 4" or larger are 8" long. Larger sizes available upon request.

Nominal Pipe Size (Inches)	DIPS Ave. Inside Dia. (Inches)	Catalog Number	SDR #	List Price
3	3.670	CPS-3DIPS	9	72.00
	3.876		11	
	4.045		13.5	
	4.201		17	
4	3.670	CPS-4DIPS	9	85.00
	3.876		11	
	4.045		13.5	
	4.201		17	
6	4.315	CPS-6DIPS	21	95.00
	5.275		9	
	5.570		11	
	5.816		13.5	
8	6.040	CPS-8DIPS	17	120.00
	6.203		21	
	6.918		9	
	7.306		11	
10	7.629	CPS-10DIPS	13.5	145.00
	7.921		17	
	8.136		21	
	8.485		9	
12	8.961	CPS-12DIPS	11	173.00
	9.357		13.5	
	9.716		17	
	9.979		21	
12	10.091	CPS-12DIPS	9	173.00
	10.656		11	
	11.127		13.5	
	11.554		17	
12	11.867	CPS-12DIPS	21	173.00

Nominal Pipe Size (Inches)	DIPS Ave. Inside Dia. (Inches)	Catalog Number	SDR #	List Price
14	11.696	CPS-14DIPS	9	269.00
	12.351		11	
	12.898		13.5	
	13.392		17	
	13.755		21	
16	14.053	CPS-16DIPS	26	348.00
	13.301		9	
	14.047		11	
	14.668		13.5	
	15.230		17	
18	15.643	CPS-18DIPS	21	361.00
	15.982		26	
	14.907		9	
	15.742		11	
	16.438		13.5	
20	17.068	CPS-20DIPS	17	423.00
	17.531		21	
	17.910		26	
	16.512		9	
	17.437		11	
20	18.208	CPS-20DIPS	13.5	423.00
	18.906		17	
	19.419		21	
	19.838		26	

TO ORDER: Select Catalog Number using nominal pipe size.

EXAMPLE: A stiffening insert for 8" D.I.P.S. - SDR11 pipe would be **CPS-8DIPS-11**.

STYLE PECST-SL

STAINLESS STEEL TAPPING SLEEVE FOR HDPE
w/ STAINLESS STEEL or LOW ALLOY FLANGE or MJ CONNECTION

MATERIAL SPECIFICATIONS *AWWA C223 Compliant*

Flange: T304 SST or Low Alloy; complies with AWWA C228 / C207

Gaskets: Virgin SBR (other materials available upon request)
Branch Gasket Patent 6,173,967B1

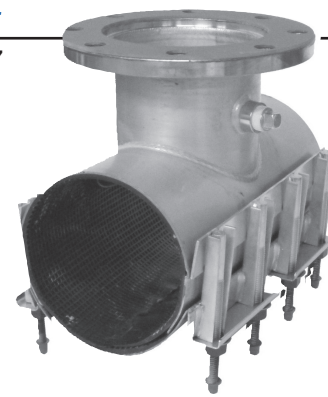
Belleville Washers: 17-7 SST

Shell/Lugs: T304 SST

Fasteners: T304 SST, 5/8 UNC, Rolled Thread;
Fluoropolymer Coated, Heavy Hex Nut

Washers/Washer Plates: T304 SST

Lubricating Washers: Nylon



Nominal Pipe Size (Inches)	O.D. Size (Inches)	Catalog Number		List Price	
		Sleeve	Outlet	S.S. Flange or MJ connection	L.A. Flange
4	4.50	PECST-SL-0450	4*	1,057.00	817.00
	4.80	PECST-SL-0480			
6	6.63	PECST-SL-0663	4	1,113.00	860.00
	6.90	PECST-SL-0690	6*	1,175.00	953.00
8	8.63 9.05	PECST-SL-0863 PECST-SL-0905	4	1,185.00	927.00
			6	1,241.00	984.00
			8*	1,524.00	1,198.00
10	10.75 11.10	PECST-SL-1075 PECST-SL-1110	4	1,209.00	1,033.00
			6	1,309.00	1,043.00
			8	1,655.00	1,321.00
			10*	2,486.00	2,020.00
12	12.75 13.20	PECST-SL-1275 PECST-SL-1320	4	1,468.00	1,086.00
			6	1,556.00	1,097.00
			8	1,895.00	1,532.00
			10	2,629.00	2,104.00
			12*	2,898.00	2,188.00

* - Indicates size on size sleeves within this range require a 1/2" undersize cutter.

NOTES: All Sleeves hydrostatically tested to at least 1.5 times the rated working pressure. Pressure rating may be application specific. Consult factory for specific applications. **Larger Sizes and 3" Flange Outlets Available.**

Products for HDPE pipe are designed for underground applications only and only on pipe with a wall thickness of SDR 26 or thicker.

TO ORDER: Choose Style of Sleeve, O.D. Range, Flange Size and Flange Type.

EXAMPLE: A super light-weight stainless steel tapping sleeve for 12" DIPS sized HDPE (O.D. ø13.20") with 6" Stainless Steel flange would be a **PECST-SL-1320-06-SS**. Same sleeve with an 8" Low Alloy flange would be **PECST-SL-1320-08-LA**.

STYLE PECR1, PECR2

STAINLESS STEEL REPAIR CLAMP FOR HDPE
SINGLE SECT., NORMAL RANGE & DOUBLE SECT., WIDE RANGE

MATERIAL SPECIFICATIONS

Shells / Lugs / Bars / Washer Plates: T304 SST

Gaskets: SBR (other materials available upon request)

Fasteners: T304 SST, 5/8 UNC, Rolled Thread; Fluoropolymer Coated, Heavy Hex Nut

Belleville Washer: 17-7 SST

Lubricating Washers: Nylon



Nominal Pipe Size (Inches)	O.D. Size (Inches)	Catalog Number	List Price				
			6"	8"	12"	16"	20"
PECR1							
3	3.50	PECR1-0350-Length	155.00	159.00	236.00	297.00	—
4	4.50	PECR1-0450-Length	160.00	168.00	255.00	323.00	—
	4.80	PECR1-0480-Length					
6	6.63	PECR1-0663-Length	—	194.00	296.00	384.00	—
	6.90	PECR1-0690-Length					
8	8.63	PECR1-0863-Length	—	216.00	340.00	430.00	—
	9.05	PECR1-0905-Length					
10	10.75	PECR1-1075-Length	—	276.00	450.00	568.00	704.00
	11.10	PECR1-1110-Length					
12	12.75	PECR1-1275-Length	—	308.00	489.00	633.00	779.00
	13.20	PECR1-1320-Length					

PECR2							
4	4.50	PECR2-0450-Length	—	273.00	409.00	523.00	—
	4.80	PECR2-0480-Length					
6	6.63	PECR2-0663-Length	—	320.00	463.00	612.00	—
	6.90	PECR2-0690-Length					
8	8.63	PECR2-0863-Length	—	331.00	488.00	628.00	—
	9.05	PECR2-0905-Length					
10	10.75	PECR2-1075-Length	—	—	665.00	750.00	1,009.00
	11.10	PECR2-1110-Length					
12	12.75	PECR2-1275-Length	—	—	800.00	864.00	1,146.00
	13.20	PECR2-1320-Length					

NOTE: Other O.D. ranges and lengths are available upon request. For higher working pressures, clamp length should be equal to or longer than the O.D. of the pipe.

Products for HDPE pipe are designed for underground applications only and only on pipe with a wall thickness of SDR 26 or thicker.

TO ORDER: Determine desired range and length, then select corresponding Catalog Number.

EXAMPLE: A single section stainless steel repair clamp, 12" in length for 8" IPS sized HDPE Pipe would be **PECR1-0863-12**.

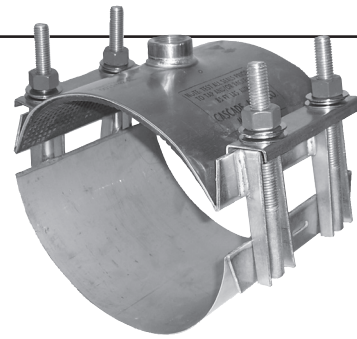
MATERIAL SPECIFICATIONS

Body / Outlet / Lugs / Washers / Washer Plates: T304 SST

Gasket: SBR (EPDM available) - Triple O-ring surrounded by full grid matt
Patents 6,173,967B1 & 6,588,767B2

Fasteners: T304 SST 5/8 UNC, Rolled Thread; Fluoropolymer Coated, Heavy Hex Nut

Belleville Washers: 17-7 SST



Nominal Pipe Size (Inches)	O.D. Size (Inches)	Catalog Number	List Price	
			3/4" - 1" I.P. or C.C.	1 1/4" - 2" I.P. or C.C.
4	4.50	PECS22-0450-Tap	222.00	249.00
	4.80	PECS22-0480-Tap		
6	6.63	PECS22-0663-Tap	229.00	259.00
	6.90	PECS22-0690-Tap		
8	8.63	PECS22-0863-Tap	235.00	268.00
	9.05	PECS22-0905-Tap		
10	10.75	PECS22-1075-Tap	241.00	276.00
	11.10	PECS22-1110-Tap		
12	12.75	PECS22-1275-Tap	251.00	285.00
	13.20	PECS22-1320-Tap		
14	14.00	PECS22-1400-Tap	292.00	329.00
	15.30	PECS22-1530-Tap		
16	16.00	PECS22-1600-Tap	310.00	345.00
	17.40	PECS22-1740-Tap		
18	18.00	PECS22-1800-Tap	319.00	361.00
	19.50	PECS22-1950-Tap		
20	20.00	PECS22-2000-Tap	335.00	371.00
	21.60	PECS22-2160-Tap		
24	24.00	PECS22-2400-Tap	365.00	403.00
	25.80	PECS22-2580-Tap		

Products for HDPE pipe are designed for underground applications only and only on pipe with a wall thickness of SDR 26 or thicker.

TO ORDER: Select Catalog Number and add Tap Size to the end of the Catalog Number.

EXAMPLE: An 8" wide, double band stainless steel saddle for 10" IPS sized HDPE, with a 2" C.C. tap would be **PECS22-1110-200C**.

STYLE PECS1, PECS12

ALL STAINLESS STEEL SERVICE SADDLE FOR HDPE
SINGLE BAND & DOUBLE BAND (5" WIDE)

MATERIAL SPECIFICATIONS

Body/Outlet/Lugs/Washers/Washer Plates: T304 SST

Gasket: SBR (EPDM available) - Triple O-ring surrounded by full grid matt
Patents 6,173,967B1 & 6,588,767B2

Fasteners: T304 SST, 5/8 UNC, Rolled Thread; Fluoropolymer Coated, Heavy Hex Nut

Belleville Washer: 17-7 SST



Nominal Pipe Size (Inches)	O.D. Size (Inches)	Catalog Number	List Price	
			3/4" - 1" I.P. or C.C.	
PECS1 - 5" Wide, Single Band				
2	2.38	PECS1-0238-Tap	123.00	For Larger Pipe Sizes & Tap Options, see PECS22'2
2-1/2	2.88	PECS1-0288-Tap	126.00	
3	3.50	PECS1-0350-Tap	129.00	
	3.96	PECS1-0396-Tap	129.00	

PECS12 - 5" Wide, Double Band				
4	4.50	PECS12-0450-Tap	163.00	For Larger Pipe Sizes & Tap Options, see PECS22'2
	4.80	PECS12-0480-Tap	163.00	
6	6.63	PECS12-0663-Tap	165.00	
	6.90	PECS12-0690-Tap	165.00	
8	8.63	PECS12-0863-Tap	168.00	
	9.05	PECS12-0905-Tap	168.00	
10	10.75	PECS12-1075-Tap	171.00	
	11.10	PECS12-1110-Tap	171.00	
12	12.75	PECS12-1275-Tap	175.00	
	13.20	PECS12-1320-Tap	175.00	

Products for HDPE pipe are designed for underground applications only and only on pipe with a wall thickness of SDR 26 or thicker.

TO ORDER: Select Catalog Number and add Tap Code to the end of the Catalog Number.

EXAMPLE: A 5" wide, double band stainless steel saddle clamp for 6" DIPS sized HDPE with a 2" C.C. tap would be **PECS12-0690-200C**.

TERMS & CONDITIONS OF SALE

1. **ALL ORDERS** are subject to Cascade's approval, acceptance, and terms. All orders are non-returnable and non-cancelable without Cascade's prior consent. Authorized returns and cancellations are subject to charges.
2. **ALL PRICES**, specifications and terms are subject to change without notice.
3. **ALL SALES AND DELIVERIES** are subject to shortage of facilities, materials or labor, strikes, fire, explosions, legal restrictions, acts of government, acts of God, force majeure, or any cause beyond Cascade's control.
4. **ALL SHIPMENTS** are F.O.B. shipping point. Title and risk of loss or damage passes to the buyer upon delivery to the carrier regardless of who pays the freight cost. In the event of shortage or damage, notation must be made on the carrier's receipt. Claims for shortage or damage must be made within seven (7) days of receipt of goods.
5. **FREIGHT CHARGES** are prepaid and added to all orders not qualifying for full freight allowance, and are subject to a minimum handling charge of 25%. Only orders of a minimum \$3500.00 net amount qualify for freight allowance (in the contiguous United States).
6. **JOB SITE DELIVERIES** are NOT allowed unless ordered **FREIGHT COLLECT**. A Job Site is any address that is not occupied during normal business hours by employees who are available, able, and equipped to unload the shipment immediately and without appointment. Job Site definition is subject to freight companies determination.
7. **NO RETURNED GOODS** will be accepted without prior written authorization from CASCADE. All authorized returns must be marked with CASCADE'S Return Goods Authorization (RGA) numbers. Appropriate documents detailing the reason for the return and including either CASCADE'S invoice number or the buyer's order number should be included with the packing list. NO FREIGHT COLLECT RETURNS WILL BE ACCEPTED.
8. **CUSTOM FABRICATED** items may not be returned under any conditions. Any item not in the price list is a custom fabrication.
9. **AUTHORIZED RETURNS** accepted for credit must be in completely resalable condition and will be subject to a minimum 25% restocking charge. If re-work is required to return goods to stock, additional charges will be assessed.
10. **PAYMENT TERMS** are net 30 days from date of invoice for accounts in good standing. Past due accounts will be subject to a service charge of 1-1/2% per month. Buyer agrees to pay all costs of collection including, but not limited to, attorneys' fees and court costs, should the indebtedness have to be collected by outside sources.
11. **MINIMUM BILLING** \$50.00

WARRANTY



Cascade Waterworks Mfg. Co. warrants its product(s) to be free of defects in material or workmanship. (Limits apply - please see specific product brochure.) Cascade will repair or replace this product if found to be defective within the warranty period, provided that the buyer submits his claim in writing and delivers the original claimed defective product in its entirety, freight prepaid to Cascade Waterworks Mfg. Co., 1213 Badger Street, Yorkville, IL, 60560 for inspection within 30 days. Any written notice and/or product shall be sent directly

to Cascade unless otherwise instructed. Sending these to a manufacturer's representative or any other agent prior to Cascade's review will void all warranties. Cascade will not be liable nor responsible for any loss, damage, or injury to any persons or property directly or indirectly arising from the use or inability to use this product. The user shall determine the suitability of the product for its intended use prior to any application and said user assumes all risks in connection with the use of this product. No claims for labor or damage will be allowed. The foregoing warranties and remedies are exclusive and in lieu of all others, whether written, oral, or implied. Buyer must advise Cascade within 30 days of discovery of the alleged defect or the claim will be barred. Upon the products' purchase from Cascade Waterworks Mfg. Co., or any of its Agents, the purchaser agrees to all of the above terms of warranty.

STYLE CCSPL - Phoenix Gold

HDPE CASING SPACERS FOR SINGLE CARRIER PIPE/LIGHT DUTY APPLICATIONS

MATERIAL SPECIFICATIONS

Spacer Segments: HDPE

Buttons: Thermoplastic Rubber (TPR)



Fasteners: Corrosion Resistant Plated steel (18-8/T304 SST optional)

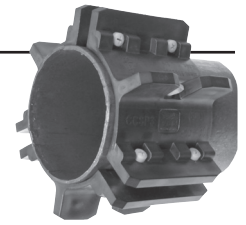
Carrier Size	Carrier Pipe Range	CCSP1 Segments	CCSP2 Segments	Total Runner Height (add to Pipe O.D.)	Catalog Number	List Price
4" & 5"	3.96 - 5.12	3		1.98	CCSPL-0512-099	24.00
				2.84	CCSPL-0512-142	25.00
				4.34	CCSPL-0512-217	28.00
				5.92	CCSPL-0512-296	31.00
				7.10	CCSPL-0512-355	34.00
				8.66	CCSPL-0512-433	36.00
5" & 6"	5.50 - 6.28	4		1.98	CCSPL-0628-099	32.00
				2.84	CCSPL-0628-142	34.00
				4.34	CCSPL-0628-217	36.00
				5.92	CCSPL-0628-296	40.00
				7.10	CCSPL-0628-355	45.00
				8.66	CCSPL-0628-433	48.00
6" & 8"	6.60 - 6.90	1	2	1.98	CCSPL-0690-099	34.00
				2.84	CCSPL-0690-142	35.00
				4.34	CCSPL-0690-217	38.00
				5.92	CCSPL-0690-296	41.00
				7.10	CCSPL-0690-355	46.00
				8.66	CCSPL-0690-433	49.00
8"	7.85 - 8.85		3	1.98	CCSPL-0885-099	35.00
				2.84	CCSPL-0885-142	36.00
				4.34	CCSPL-0885-217	39.00
				5.92	CCSPL-0885-296	42.00
				7.10	CCSPL-0885-355	50.00
				8.66	CCSPL-0885-433	53.00
8" & 10"	8.15 - 9.55	2	2	1.98	CCSPL-0955-099	36.00
				2.84	CCSPL-0955-142	38.00
				4.34	CCSPL-0955-217	41.00
				5.92	CCSPL-0955-296	48.00
				7.10	CCSPL-0955-355	56.00
				8.66	CCSPL-0955-433	63.00
10"	9.50 - 11.08	1	3	1.98	CCSPL-1108-099	37.00
				2.84	CCSPL-1108-142	39.00
				4.34	CCSPL-1108-217	42.00
				5.92	CCSPL-1108-296	49.00
				7.10	CCSPL-1108-355	57.00
				8.66	CCSPL-1108-433	64.00
10" & 12"	10.60 - 12.40		4	1.98	CCSPL-1240-099	38.00
				2.84	CCSPL-1240-142	42.00
				4.34	CCSPL-1240-217	43.00
				5.92	CCSPL-1240-296	51.00
				7.10	CCSPL-1240-355	64.00
				8.66	CCSPL-1240-433	71.00
12" & 14"	12.10 - 14.30	1	4	1.98	CCSPL-1430-099	46.00
				2.84	CCSPL-1430-142	50.00
				4.34	CCSPL-1430-217	53.00
				5.92	CCSPL-1430-296	61.00
				7.10	CCSPL-1430-355	74.00
				8.66	CCSPL-1430-433	83.00
12" & 14"	13.50 - 15.50	2	4	1.98	CCSPL-1550-099	51.00
				2.84	CCSPL-1550-142	55.00
				4.34	CCSPL-1550-217	59.00
				5.92	CCSPL-1550-296	68.00
				7.10	CCSPL-1550-355	84.00
				8.66	CCSPL-1550-433	93.00
14" & 16"	14.75 - 16.50	1	5	1.98	CCSPL-1650-099	56.00
				2.84	CCSPL-1650-142	60.00
				4.34	CCSPL-1650-217	65.00
				5.92	CCSPL-1650-296	75.00
				7.10	CCSPL-1650-355	90.00
				8.66	CCSPL-1650-433	101.00
16"	17.40		6	1.98	CCSPL-1740-099	57.00
				2.84	CCSPL-1740-142	64.00
				4.34	CCSPL-1740-217	67.00
				5.92	CCSPL-1740-296	80.00
				7.10	CCSPL-1740-355	98.00
				8.66	CCSPL-1740-433	116.00

NOTES: DO NOT USE on DI Pipe over $\varnothing 12"$. For Stainless Steel Hardware, add \$3.50 per segment to the NET price. New configurations exist. Please use sizing from chart as shown above.

MATERIAL SPECIFICATIONS

Spacer Segments: HDPE

Buttons: Thermoplastic Rubber (TPR)



Bolts: Urethane (GF)

Nuts: Nylon 6/6

Carrier Size	Carrier Pipe Range	CCSP3 Segments	CCSP4 Segments	Total Runner Height	Catalog Number	List Price
1-1/2"	1.90 [48]	2		0.63	CCSPL-0190-063	21.50
				0.75	CCSPL-0190-075	21.75
				1.00	CCSPL-0190-100	22.00
				1.50	CCSPL-0190-150	22.25
2"	2.13 [54]	2		0.63	CCSPL-0213-063	22.50
				0.75	CCSPL-0213-075	22.75
				1.00	CCSPL-0213-100	23.00
				1.50	CCSPL-0213-150	23.25
2"	2.38 [60]	1	1	0.63	CCSPL-0238-063	23.50
				0.75	CCSPL-0238-075	23.75
				1.00	CCSPL-0238-100	24.00
				1.50	CCSPL-0238-150	24.25
2-1/2"	2.63 [67]		2	0.63	CCSPL-0263-063	24.50
				0.75	CCSPL-0263-075	24.75
				1.00	CCSPL-0263-100	25.00
				1.50	CCSPL-0263-150	25.25
2-1/2"	2.88 [73]		2	0.63	CCSPL-0288-063	25.50
				0.75	CCSPL-0288-075	25.75
				1.00	CCSPL-0288-100	26.00
				1.50	CCSPL-0288-150	26.25
3"	3.13 [80]	3		0.63	CCSPL-0313-063	26.50
				0.75	CCSPL-0313-075	26.75
				1.00	CCSPL-0313-100	27.00
				1.50	CCSPL-0313-150	27.25
3"	3.50 [89]	2	1	0.63	CCSPL-0350-063	27.50
				0.75	CCSPL-0350-075	27.75
				1.00	CCSPL-0350-100	28.00
				1.50	CCSPL-0350-150	28.25

NOTES: NOT FOR USE on nominal pipe sizes over 3" (ø3.50").